



IN THIS EMAIL

[Upcoming Events](#)

[Teaching Effectively in a World of AI](#)

[Communication: Visual Syllabus](#)

[Applications Card](#)

[Learning More About Canvas](#)



ITLE ANNUAL TEACHING WITH TECHNOLOGY CONFERENCE: ENHANCING EDUCATION THROUGH TECHNOLOGY & AI INNOVATION

Oklahoma State University's annual Teaching with Technology Conference aims to provide a forum in which educational professionals representing all disciplines and specialties may exchange their ideas and explore research, development and applications in this important field of teacher education and technology.

Keynote Speaker



Dr. John Spencer, associate professor of education at George Fox University, founder of Blend Education Publishing and author of *Vintage Innovation: Leveraging Retro Tools and Classic Ideas to Design Deeper Learning Experiences*. @johnspencerideas

Breakout Session Tracks Include:

1. **“Techquity”** — Technology as a Tool for Enhancing Accessibility, Inclusion and Diversity
2. **Collaboration & Community** — Uniting Minds, Creating Connections
3. **Authentic Learning** — Tech Tools that Empower Authentic Learning & Teaching
4. **Teaching in the Age of AI** — Innovation to Meet Acceleration

9 a.m. to 3 p.m., June 22, at the Wes Watkins Center

[Register Here](#)

[Submit Proposals](#) by May 22

[Conference Overview \(PDF\)](#).

AUTHENTIC LEARNING AND ASSESSMENT IN HIGHER EDUCATION: A RESPONSE TO ARTIFICIAL INTELLIGENCE

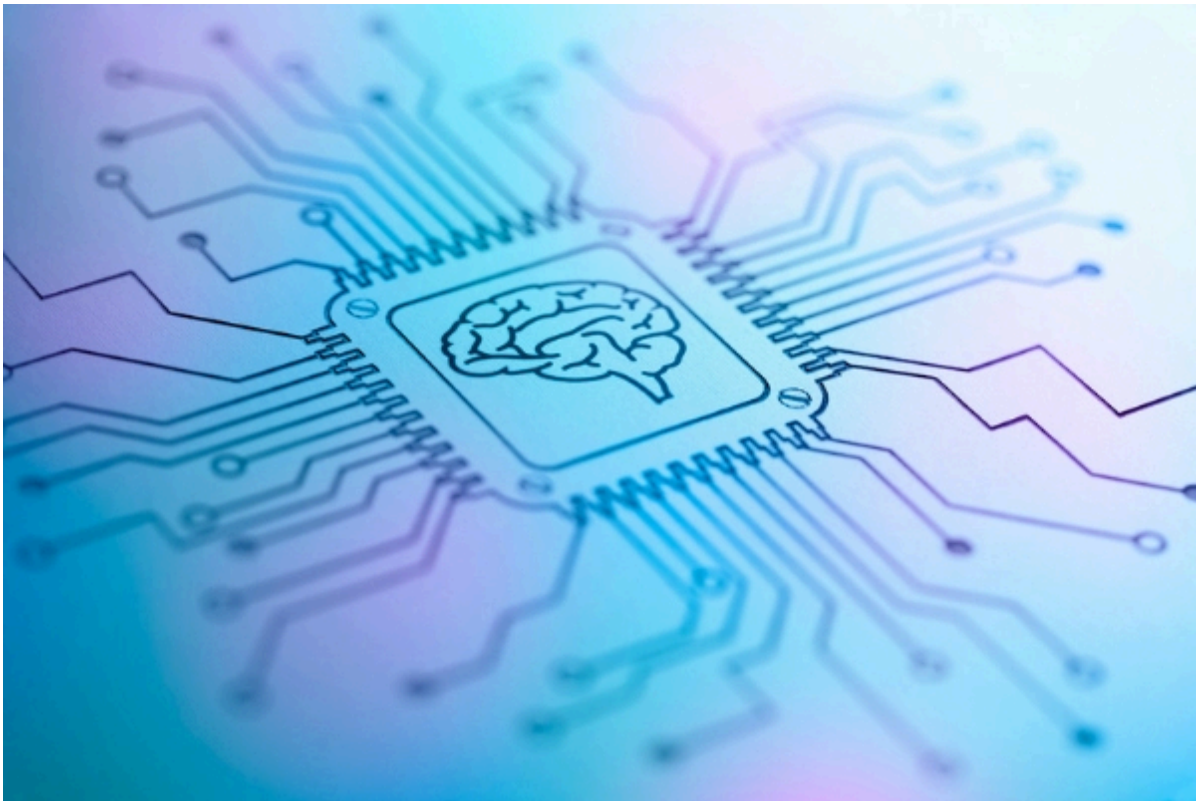
Artificial intelligence, such as ChatGPT, has taken the world by storm. In a matter of moments, students can use ChatGPT and other AI tools to produce a fully developed, highly detailed and accurate paper on any given topic.

Although an incredible resource intended for good, it is possible these tools can have a negative impact on student engagement and success. Therefore, instructors are encouraged to (re)think their assessment strategies to engage their students in deeper learning. This session will focus on the purpose of assessment and encourage faculty to consider introducing authentic assessment strategies to the learning environment.

1-2:30 p.m., Wednesday, April 19, 2023

[Register Here](#)

TEACHING EFFECTIVELY IN A WORLD OF AI



AI is disrupting and transforming education. AI tools, such as ChatGPT, have implications for how instructors teach and assess students. In this new world of AI, instructors should reimagine their teaching by implementing problem-based learning, critical thinking strategies and creative approaches in their lessons to help students solve difficult problems.

Learn more from Dr. Bernhard Schindlholzer in his TEDx Talk titled: ["Artificial Intelligence and the Future of Education Systems"](#)

USING AI IN THE CLASSROOM

Smart Prompting is key to accessing the benefits of chatbots like ChatGPT.

Chatbots can be trained to provide instructors with case-based learning scenarios by acting as a 'client' in the context of their disciplinary background.

Here is a sample prompt: "Can you act as a client for a business that needs a marketing strategy to sell a product? Construct a brief from a marketing expert to use and create a marketing strategy. Identify the product and the target audience. Identify the parameter for the strategy and include the market reach, budget, and timeline."

Chatbots can also be trained to create automated emails to help answer

common questions from students.

Here is a sample prompt: "Can you help me create an automated email responder for common questions from students in an undergraduate History course?"

Other uses for AI could be:

- Use ChatGPT to determine course outcomes.
- Use ChatGPT to generate discussion questions.

Look out for next week's Teaching Tips newsletter to learn more about how AI can improve effective teaching and learning in and out of the classroom.

COMMUNICATION: VISUAL SYLLABUS

What should instructors consider when considering how an online course syllabus might differ from a traditional in-person course? For example, how can teachers ensure that their syllabus enhances students' online learning experience? This week we look at creating a Visual Syllabus, what research says about the instrument, and resources to help instructors transition to using a more engaging roadmap for student success.

To learn more and access this week's module, we invite all online/hybrid instructors to join ITLE's Online Instructor Tips and Tools Community. Each week, a new tip or tool will be released detailing resources designed to enrich the quality of online courses. This community will also provide a space for instructors to ask and answer questions concerning best practices in online instruction. Click the link below or scan the QR code with your phone's camera to join in on the discussion!

[Join Here](#)



APPLICATIONS CARD

The Applications Card is a quick and easy assessment technique that encourages students to think about the broader relevance of course content. It provides a mechanism for linking theory and practice, and these links strengthen the mental connections that result in significant learning. In addition, it is easily adapted to a variety of class types and sizes.

[PDF Guide](#)



LEARNING MORE ABOUT CANVAS

We have many resources available for faculty to learn more about Canvas. Whether you are just starting here at OSU or are a seasoned pro, there is sure to be something to expand your Canvas knowledge!

CANVAS TIPS

NEED HELP WITH YOUR COURSE DESIGN?

As the semester progresses, remember that ITLE teaching support specialists are happy to assist. You can reach out to kdickey@okstate.edu or gina.morris@okstate.edu for assistance.

HAVE QUESTIONS ABOUT TEACHING ONLINE?

Contact ITLE for assistance with your online teaching questions.

Phone: [405.744.1000](tel:405.744.1000)

Email: canvas@okstate.edu

ITLE WEBSITE

Oklahoma State University
413 Whitehurst
Stillwater, OK 74078

Copyright © 2023 Oklahoma State University, All rights reserved.

You are subscribed to this list as an employee or student of Oklahoma State University.