



INSTITUTE FOR TEACHING AND LEARNING EXCELLENCE

Supporting faculty in the creation and development of high-impact learning opportunities.



IN THIS EMAIL

[Upcoming Events](#)

[Teaching Effectively in a World of AI](#)

[Course \(Re\)design in a World of AI](#)

[Growing with Canvas](#)

[Directed Paraphrasing](#)

[Learning More About Canvas](#)



ITLE ANNUAL TEACHING WITH TECHNOLOGY CONFERENCE: ENHANCING EDUCATION THROUGH TECHNOLOGY & AI INNOVATION

Oklahoma State University's annual Teaching with Technology Conference aims to provide a forum in which educational professionals representing all disciplines and specialties may exchange their ideas and explore research, development and applications in this important field of teacher education and technology.

Keynote Speaker



Dr. John Spencer, associate professor of education at George Fox University, founder of Blend Education Publishing and author of *Vintage Innovation: Leveraging Retro Tools and Classic Ideas to Design Deeper Learning Experiences*. @johnspencerideas

Breakout Session Tracks Include:

1. **“Techquity”** — Technology as a Tool for Enhancing Accessibility, Inclusion and Diversity
2. **Collaboration & Community** — Uniting Minds, Creating Connections
3. **Authentic Learning** — Tech Tools that Empower Authentic Learning & Teaching
4. **Teaching in the Age of AI** — Innovation to Meet Acceleration

9 a.m. to 3 p.m. on Thursday, June 22, at Wes Watkins Center

[Register Here](#)

[Submit Proposals](#) by May 22

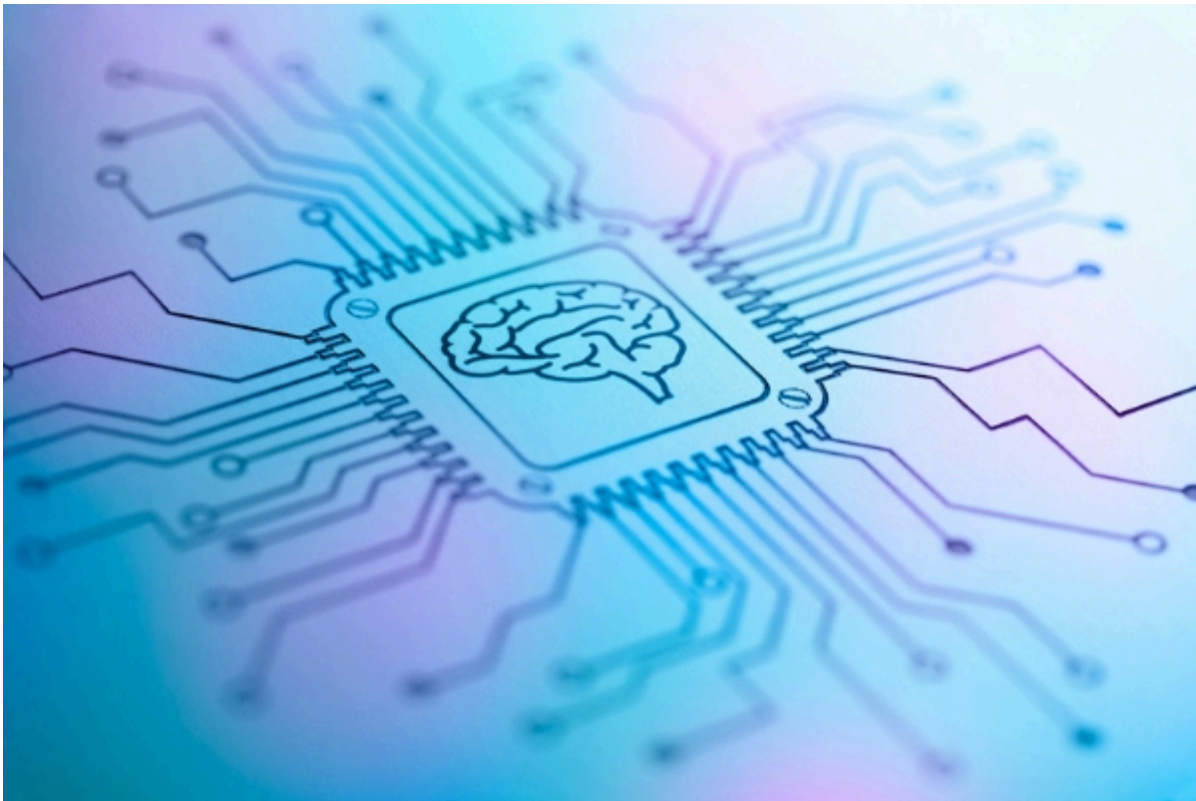
[Conference Overview \(PDF\)](#).

UPCOMING GTA CONFERENCE

Be sure to save the date on the upcoming GTA Conference: *"Good Teaching is Good Teaching!"*

The conference will be held on Aug. 16, 2023, at the Wes Watkins Center. Registration and more information will be available soon, so keep your eyes peeled!

TEACHING EFFECTIVELY IN A WORLD OF AI



AI tools (ChatGPT) can be used as an educational tutor for students preparing for formative or summative assessments. Here are some tips on how to use AI/ChatGPT as an educational tutor:

1. Students enter a prompt with a specific question or topic. For example, if they are studying the history of Rome and cannot remember a fact about the order of influential leaders, they could ask, "Who led Rome before/after Marcus Aurelius?"
2. Ask follow-up questions. Chatbots may provide incorrect information or may only provide the necessary information. Students can ask follow-up questions to clarify any doubts or misunderstandings. After the initial question, students can ask, "Can you explain that in more detail?" and follow up their inquiry with their original course materials.
3. Students can even get short practice with the information they are studying. For example, they can copy and paste a body of text and ask the bot to create practice questions. Then, students can begin a new chat, write the answers back into the bot, and see if they got the information correctly.
4. Further, students having difficulty remembering a particular concept can ask AI/ChatGPT to write a catchy song to help put the information into memory.

5. AI/ChatGPT can help students create a study plan. Students can enter their dates for exams for each subject, write out the parameters of dates and times of availability and ask the bot to create a study schedule to ensure time is allotted for each content area.
-

COURSE (RE)DESIGN IN A WORLD OF ARTIFICIAL INTELLIGENCE

Get a head start on planning your summer and fall 2023 courses! This professional development session offers faculty an opportunity to consider course design within today's ever-evolving instructional climate. Participants will apply a model for planning courses that emphasizes clear outcomes, relevant and authentic assignments, and assessments that inform teaching and learning.

During this interactive WORKshop format, attendees should expect to spend significant time applying these ideas to their course materials. Both sessions offer the same information and provide in-person and Zoom options, making it easy to fit into your daily schedule. Please select one of the following:

Session 1: May 19, 9 to 11 am in ITLE 126 ([Register Here](#))

Session 2: May 22, 9 to 11 am in ITLE 126 ([Register Here](#))

GROWING WITH CANVAS OPENS

This week, the Growing with Canvas (GWC) self-paced course opens! This comprehensive course is designed to help instructors learn how to use Canvas effectively in traditional classrooms and online learning environments.

Participants in this course will watch videos, use Canvas documentation, complete activities, and participate in discussions to learn and apply Canvas features. In addition, teachers will earn Growing With Canvas badges to demonstrate their accomplishments along the way. GWC is an excellent option for instructors new to Canvas or those hoping to improve their tech-savvy skills specific to Canvas.

To learn more and access this week's module, we invite all online/hybrid

instructors to join ITLE's Online Instructor Tips and Tools Community. Each week, a new tip or tool will be released detailing resources designed to enrich the quality of online courses. This community will also provide a space for instructors to ask and answer questions concerning best practices in online instruction. Click the link below or scan the QR code with your phone's camera to join in on the discussion!

[Join Here](#)



DIRECTED PARAPHRASING

Directed Paraphrasing is a technique that encourages instructors and students to consider the wider relevance of content. Particularly useful for fields that require experts to translate specialized information in a way that clients or customers will understand, this technique is a worthwhile scaffold for helping students develop such skills.

[PDF Guide](#)



LEARNING MORE ABOUT CANVAS

We have many resources available for faculty to learn more about Canvas. Whether you are just starting here at OSU or are a seasoned pro, there is sure to be something to expand your Canvas knowledge!

CANVAS TIPS

NEED HELP WITH YOUR COURSE DESIGN?

As the semester progresses, remember that ITLE teaching support specialists are happy to assist. You can reach out to kdickey@okstate.edu or gina.morris@okstate.edu for assistance.

HAVE QUESTIONS ABOUT TEACHING ONLINE?

Contact ITLE for assistance with your online teaching questions.

Phone: [405.744.1000](tel:405.744.1000)

Email: canvas@okstate.edu

[ITLE WEBSITE](#)

Oklahoma State University

413 Whitehurst

Stillwater, OK 74078

Copyright © 2023 Oklahoma State University, All rights reserved.

You are subscribed to this list as an employee or student of Oklahoma State University.