



# INSTITUTE FOR TEACHING AND LEARNING EXCELLENCE

*Supporting faculty in the creation and development of high-impact learning opportunities.*



## IN THIS EMAIL

- [Upcoming Events](#)
- [Teaching Effectively in a World of AI](#)
- [Preparing Online Instructors 2.0](#)
- [Online Instructors Canvas Community](#)
- [Tips to Improve Students' Experiences in Online Courses](#)
- [Learning More About Canvas](#)

**ANNOUNCEMENT: SYLLABUS STATEMENTS FOR AI IN THE CLASSROOM**

Please include a statement in your syllabus that clarifies to what extent, if any, students are allowed to use generative AI such as ChatGPT, Bing AI or Bard in your course. We have created sample statements that you can use, in whole or with modifications. You can find these statements on the [ITLE website](#).

---



### **2023 EARLY CAREER SUPPORT PROGRAM**

Noon to 1:30 p.m. on Sept. 1, 2023 (Lunch at 11:45 a.m.)

The Early Career Faculty Support series was designed to support new faculty in their first three years of service at OSU. Topics in the series focus on resources and services that are relevant to new and tenure-seeking faculty.

[Register Here](#)

View the Agenda [Here](#)

---

### **OSU FACULTY READS: *LEARNING THAT MATTERS: A FIELD GUIDE TO COURSE DESIGN FOR TRANSFORMATIVE EDUCATION***

Meets virtually on Sept. 11, Oct. 9 and Nov. 6, 2023

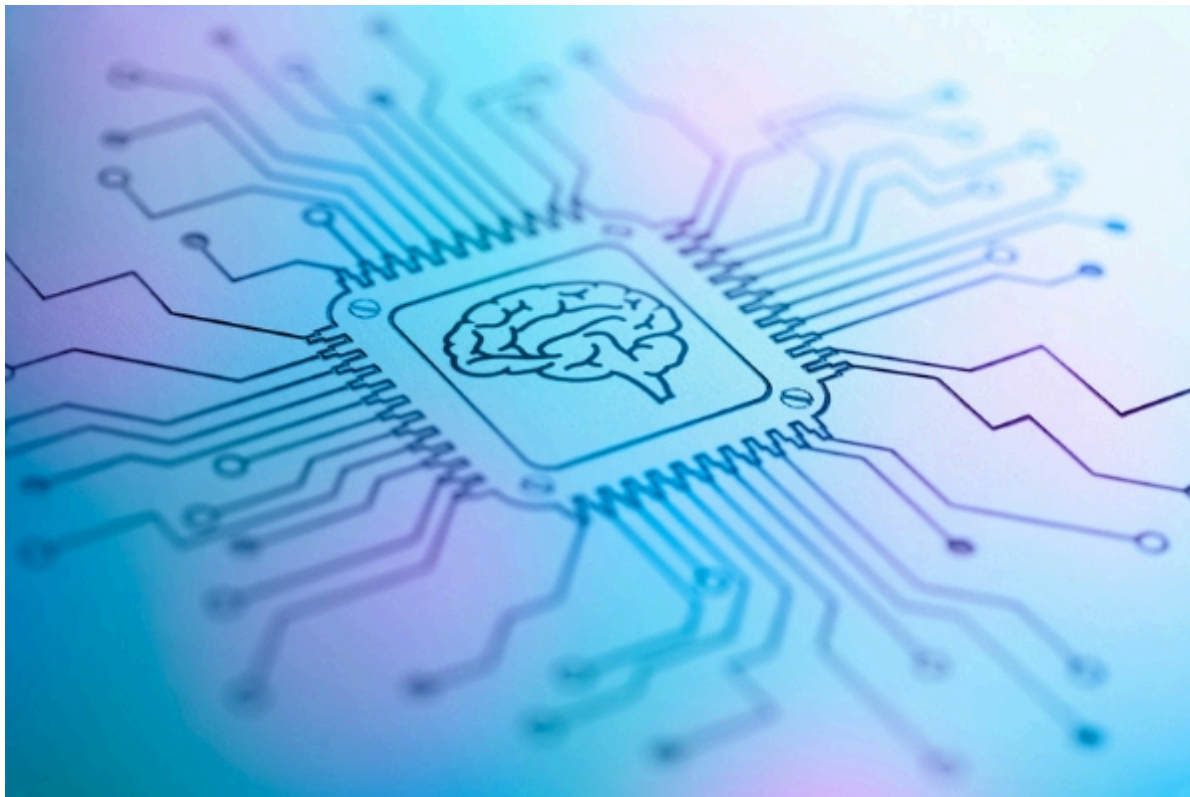
*"This is a phenomenal book by Caralyn Zehnder, Cynthia Alby, Karynne Kleine and Julia Metzker is full of teaching strategies that promote inclusivity and*

equity in the university classroom. It is definitely one of our favorite recent releases." - Kristi & Gina, ITLE Teaching Support Team

[Register Here](#)

---

## TEACHING EFFECTIVELY IN A WORLD OF AI



Artificial Intelligence (AI) tools, such as ChatGPT, Google Bard or Microsoft Bing can be valuable resources for university students, assisting with research, writing and learning. However, it is crucial to utilize these tools ethically and responsibly. The following strategies will support students in making the most of AI tools while maintaining academic integrity and ethical conduct. Each of the 10 sections has an accompanying video linked at the top of its respective section.

[Learn More](#)

---

## DESIGNING COLLEGE COURSES VIDEO SERIES

This video series was created as a guide to support instructors as they reflect on the design of their courses, whether they be revisions or brand-new creations. *Backward Design* is a framework for designing courses that starts



with the end – the goals or outcomes you have for your students. This model will help you create courses that are focused on student learning and understanding, rather than on covering content or following a textbook. This approach shifts the focus from “What am I going to teach today?” to “What are students going to learn today?” It will also help you ensure that your courses are coherent, relevant and engaging for your students.

[Start Learning Here](#)

---

## **PREPARING ONLINE INSTRUCTORS 2.0**

This six-week fully online course (Sept. 25-Nov. 6, 2023) is built upon the foundation of the prerequisite course Preparing Online Instructors. POI 2.0 is designed to help instructors deliver and facilitate quality online student learning experiences. Upon completion, participants will have the knowledge and skills necessary to facilitate quality student-centered learning while incorporating authentic learning in their online course activities.

[Register Here](#)

[Learn More](#)

---

## **ONLINE INSTRUCTOR CANVAS COMMUNITY**

To learn more about teaching online and access this week's module, we invite all online/hybrid instructors to join ITLE's Online Instructor Tips and Tools Community. Each week, a new tip or tool will be released detailing resources designed to enrich the quality of online courses. This community will also provide a space for instructors to ask and answer questions concerning best practices in online instruction. Click the link below or scan the QR code with your phone's camera to join the discussion!

[Join Here](#)



---

## **TIPS TO IMPROVE STUDENTS' EXPERIENCES IN ONLINE COURSES**

As you plan your online courses, please be sure to include regular communication and interactions. Unlike in-person courses — where faculty are at the center of all learning experiences — in online courses, whether synchronous and asynchronous, the role of the faculty as the instructional leader often is lost in the digital environment.

The faculty role as an instructional leader is critical as it builds rapport and trust between faculty and students; helps clarify expectations; provides feedback and guides students through the course content and assignments; encourages students to become engaged in the course; and helps facilitate social interaction and collaboration among students. The resource below has suggestions for how faculty can keep connected with students in online courses.

[Learn More](#)

---

## **LEARNING MORE ABOUT CANVAS**

We have many resources available for faculty to learn more about Canvas. Whether you are just starting here at OSU or are a seasoned pro, there is sure to be something to expand your Canvas knowledge!

# CANVAS TIPS

## NEED HELP WITH YOUR COURSE DESIGN?

As the semester progresses, remember that ITLE teaching support specialists are happy to assist. You can reach out to [kdickey@okstate.edu](mailto:kdickey@okstate.edu) or [gina.morris@okstate.edu](mailto:gina.morris@okstate.edu) for assistance.

## HAVE QUESTIONS ABOUT TEACHING ONLINE?

Contact ITLE for assistance with your online teaching questions.

Phone: [405.744.1000](tel:405.744.1000)

Email: [canvas@okstate.edu](mailto:canvas@okstate.edu)

[ITLE WEBSITE](#)

Oklahoma State University  
413 Whitehurst  
Stillwater, OK 74078

*Copyright © 2023 Oklahoma State University, All rights reserved.*

You are subscribed to this list as an employee or student of Oklahoma State University.