



# INSTITUTE FOR TEACHING AND LEARNING EXCELLENCE

*Supporting faculty in the creation and development of high-impact learning opportunities.*



## IN THIS EMAIL

- [Upcoming Events](#)
- [Teaching Effectively in a World of AI](#)
- [Preparing Online Instructors 2.0](#)
- [Online Instructors Canvas Community](#)
- [Sample Syllabus Statements for AI in the Classroom](#)
- [Course Combines Available](#)
- [Learning More About Canvas](#)



## **FALL 2023 CANVAS TRAINING ONLINE SESSIONS**

Starts Aug. 8, 2023, and Aug. 15, 2023

Zoom: 2-3:30 p.m.

Both three-week online Zoom courses cover the basic aspects of Canvas and what you need to know to start the semester off successfully! Both series present the same content, so you only need to register for one.

[Register Here for Aug. 8 - Aug. 10 Courses](#)

[Register Here for Aug. 15 - Aug. 17 Courses](#)

---

## **IClicker UPDATE**

This training is intended to provide information on changes and new features to those that have used iClicker previously. The new group feature and quizzing options will be covered.

Friday, Aug. 11, 11 a.m. to noon — Online

[Register Here](#)

---

## **IClicker INTRODUCTION**

This training is intended for those new to using iClicker or looking for a

refresher on using the system. It will cover creating an iClicker account, creating and administering polls and integrating iClicker with a course site in Canvas.

Monday, Aug. 14, 1-2 p.m. — Online

Friday, Aug. 18, 11 a.m. to noon — Online

[Register Here](#)

---

## **GTA CONFERENCE: "GOOD TEACHING IS GOOD TEACHING"**

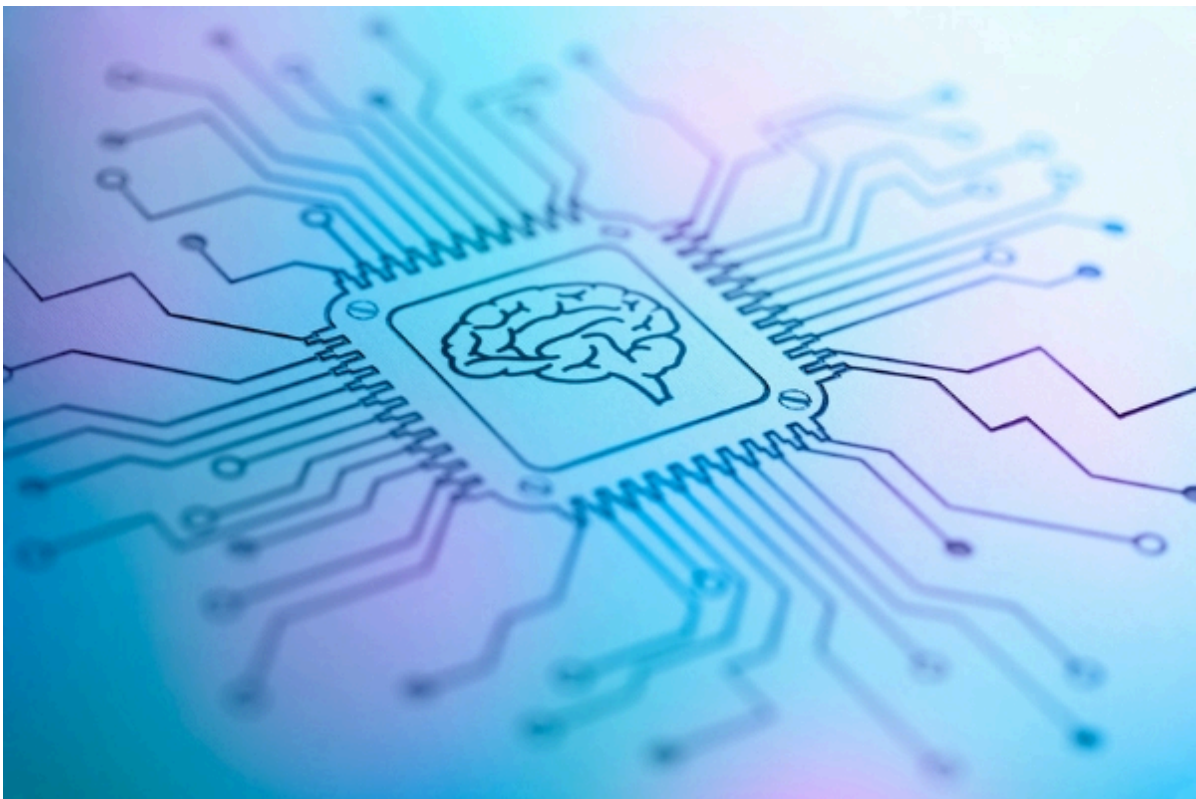
Be sure to save the date on the upcoming GTA Conference: "*Good Teaching is Good Teaching!*" Registration is open until Aug. 11 and is linked below.

The conference will be held on Wednesday, Aug. 16, at the Wes Watkins Center.

[Register Here](#)

---

## **TEACHING EFFECTIVELY IN A WORLD OF AI**



Artificial Intelligence (AI) tools, such as ChatGPT, Google Bard or Microsoft

Bing, can be valuable resources for university students, assisting with research, writing and learning. However, it is crucial to utilize these tools ethically and responsibly. The following strategies will support students in making the most of AI tools while maintaining academic integrity and ethical conduct. Each of the 10 sections has an accompanying video linked at the top of its respective section.

[Learn More](#)

---

## **AUDIT YOUR DAY AND ENHANCE YOUR PRODUCTIVITY AND EFFICIENCY**

AI tools can optimize tasks and save valuable time. ChatGPT can proactively identify repetitive tasks and improvements, further enhancing efficiency. Instructors can unlock new levels of productivity, focus on strategic work and benefit from a streamlined workflow. Try the following prompt approach to audit tasks in your day to find ways AI can assist time management.

[Learn More](#)

---

## **AI TRAINING FOR INDIVIDUAL COLLEGES**

ITLE will be providing AI Training to colleges on the following dates and times. If your college is not represented, or if you are not able to attend your college's scheduled training, please consider attending the virtual "Open" AI Session on Aug. 15 at 3 p.m. You can [Register Here](#) for that session!

### **Aug. 14**

2:30-4 p.m. – College of Engineering, Architecture and Technology (364 Engineering North)

### **Aug. 15**

9-10:30 a.m. – Spears School of Business (BU 001)

10:15-11:45 a.m. – Ferguson College of Agriculture (Wes Watkins Center)

1-2:30 p.m. – Honors College (201 Old Central)

3-4:30 p.m. – "Open" AI Zoom Session ([Register Here](#))

### **Aug. 17**

9-10:30 a.m. – College of Education and Human Sciences (010 Willard Hall)

---

## **DESIGNING COLLEGE COURSES VIDEO SERIES**

This video series was created as a guide to support instructors as they reflect on the design of their courses, whether they be revisions or brand-new creations. *Backward Design* is a framework for designing courses that starts with the end – the goals or outcomes you have for your students. This model will help you create courses that are focused on student learning and understanding, rather than on covering content or following a textbook. This approach shifts the focus from “What am I going to teach today?” to “What are students going to learn today?” It will also help you ensure that your courses are coherent, relevant and engaging for your students.

[Start Learning Here](#)

---

## **PREPARING ONLINE INSTRUCTORS 2.0**

This six-week fully online course (Sept. 25 - Nov. 6, 2023) is built upon the foundation of the prerequisite course Preparing Online Instructors (POI). POI 2.0 is designed to help instructors deliver and facilitate quality online student learning experiences. Upon completion, participants will have the knowledge and skills necessary to facilitate quality student-centered learning while incorporating authentic learning in their online course activities.

[Register Here](#)

[Learn More](#)

---

## **ONLINE INSTRUCTOR CANVAS COMMUNITY**

To learn more about teaching online and access this week's module, we invite all online/hybrid instructors to join ITLE's Online Instructor Tips and Tools Community. Each week, a new tip or tool will be released detailing resources designed to enrich the quality of online courses. This community will also provide a space for instructors to ask and answer questions concerning best practices in online instruction. Click the link below or scan the QR code with your phone's camera to join the discussion!

[Join Here](#)



---

## **SAMPLE SYLLABUS STATEMENTS FOR AI IN THE CLASSROOM**

Faculty will want to communicate to their students the extent to which students may use generative AI tools to complete class assignments. Some faculty may allow students to use the tools like Chat GPT or Bing AI without limits; others may decide to restrict how generative AI tools can be used. We have provided sample statements for clarifying how generative AI can be used by students in classes or other learning situations that can be included in course syllabi or other communications. We have also provided examples from other institutions.

[Learn More](#)

---

## **COURSE COMBINES AVAILABLE**

Course sections within Canvas for fall 2023 are now available to be combined upon request. To request a combination of two or more course sections, email [canvas@okstate.edu](mailto:canvas@okstate.edu) with the names of the courses as they currently appear in Canvas including the five-digit CRN code.

Please be aware that not all materials in combined sections will be preserved during the combining process. Because of this, it is not recommended to combine sections once a semester has begun.

---

## LEARNING MORE ABOUT CANVAS

We have many resources available for faculty to learn more about Canvas. Whether you are just starting here at OSU or are a seasoned pro, there is sure to be something to expand your Canvas knowledge!

# CANVAS TIPS

### NEED HELP WITH YOUR COURSE DESIGN?

As the semester progresses, remember that ITLE teaching support specialists are happy to assist. You can reach out to [kdickey@okstate.edu](mailto:kdickey@okstate.edu) or [gina.morris@okstate.edu](mailto:gina.morris@okstate.edu) for assistance.

### HAVE QUESTIONS ABOUT TEACHING ONLINE?

Contact ITLE for assistance with your online teaching questions.

Phone: [405.744.1000](tel:405.744.1000)

Email: [canvas@okstate.edu](mailto:canvas@okstate.edu)

ITLE WEBSITE

Oklahoma State University  
413 Whitehurst  
Stillwater, OK 74078

*Copyright © 2023 Oklahoma State University, All rights reserved.*

You are subscribed to this list as an employee or student of Oklahoma State University.