



INSTITUTE FOR TEACHING AND LEARNING EXCELLENCE

Supporting faculty in the creation and development of high-impact learning opportunities.



IN THIS EMAIL

- [Upcoming Events](#)
- [Teaching Effectively in a World of AI](#)
- [Sample Syllabus Statements for AI in the Classroom](#)
- [Preparing Online Instructors 2.0](#)
- [Online Instructors Canvas Community](#)
- [Course Combines Available](#)
- [Learning More About Canvas](#)



2023 OSU NEW FACULTY ORIENTATION

New to OSU? Make time to attend the 2023 OSU New Faculty Orientation from 8:30 a.m. to 4 p.m., Aug. 10 & 11, at Wes Watkins Center, Exhibit Hall Room 111/112.

This event is for newly hired tenure track and non-tenure track (research, clinical, teaching, professional practice, extension, adjunct and visiting) faculty.

[Register Here](#)

See the agenda [here](#).

GTA CONFERENCE: "GOOD TEACHING IS GOOD TEACHING"

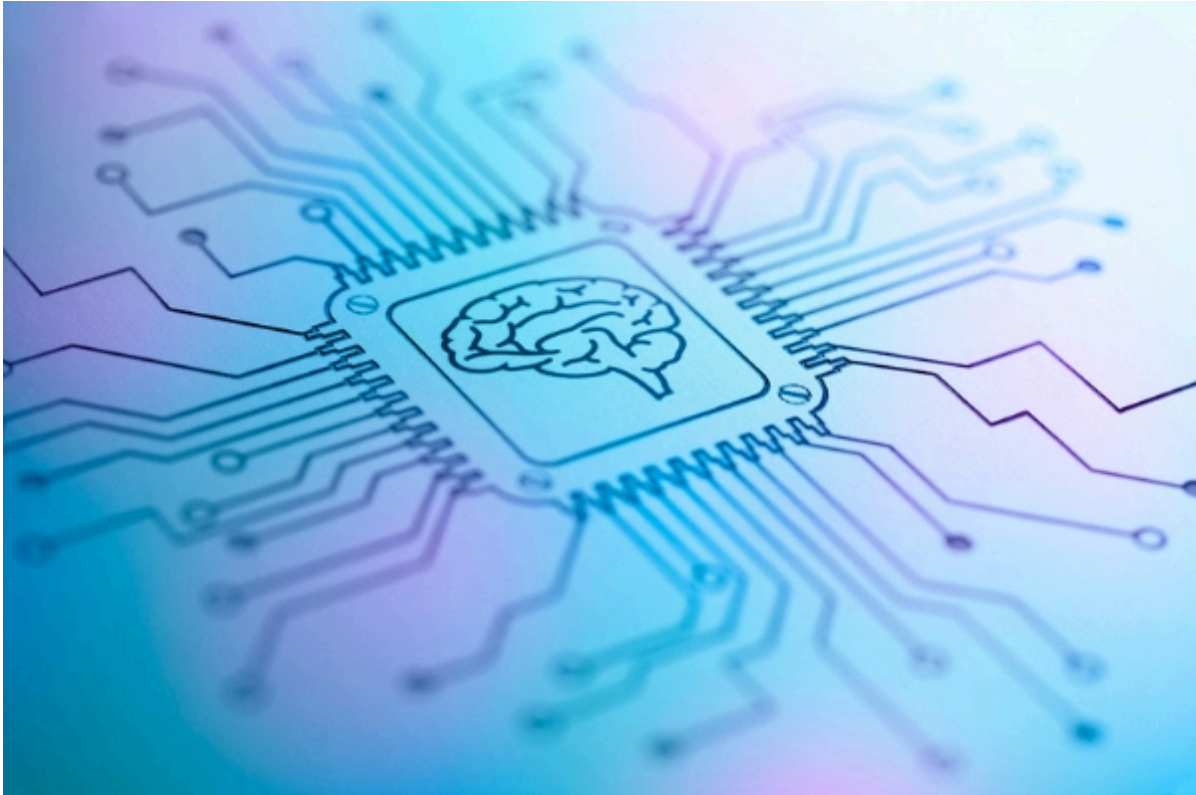
Be sure to save the date on the upcoming GTA Conference: "*Good Teaching is Good Teaching!*" Registration is open until Aug. 11 and is linked below.

The conference will be held on Wednesday, Aug. 16, at the Wes Watkins

Center.

[Register Here](#)

TEACHING EFFECTIVELY IN A WORLD OF AI



This week's AI Tip provides guidance for first-time ChatGPT users, explaining the process of signing up for ChatGPT 3.5 and unlocking its powerful capabilities. Viewers will be introduced to the various features of the ChatGPT window, accompanied by a clear demonstration of generating responses and customizing the AI's behavior. This tutorial is particularly beneficial for individuals new to AI, offering an opportunity to explore a whole new level of assistance and unleash their creativity with ChatGPT 3.5.

[Watch Tutorial](#)

PREPARING ONLINE INSTRUCTORS 2.0

This six-week fully online course (Sept. 25 - Nov. 6, 2023) is built upon the foundation of the prerequisite course Preparing Online Instructors. POI 2.0 is

designed to help instructors deliver and facilitate quality online student learning experiences. Upon completion, participants will have the knowledge and skills necessary to facilitate quality student-centered learning while incorporating authentic learning in their online course activities.

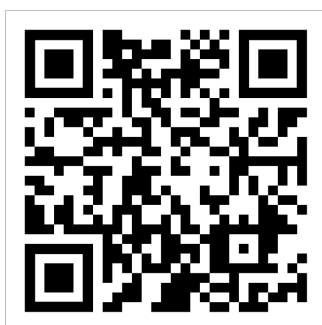
[Register Here](#)

[Learn More](#)

ONLINE INSTRUCTOR CANVAS COMMUNITY

To learn more about teaching online and access this week's module, we invite all online/hybrid instructors to join ITLE's Online Instructor Tips and Tools Community. Each week, a new tip or tool will be released detailing resources designed to enrich the quality of online courses. This community will also provide a space for instructors to ask and answer questions concerning best practices in online instruction. Click the link below or scan the QR code with your phone's camera to join the discussion!

[Join Here](#)



SAMPLE SYLLABUS STATEMENTS FOR AI IN THE CLASSROOM

Faculty will want to communicate to their students the extent to which students may use generative AI tools to complete class assignments. Some faculty may allow students to use generative AI tools like Chat GPT or Bing AI without limits; others may decide to restrict how generative AI tools can be used. We

have provided sample statements for clarifying how generative AI can be used by students in classes or other learning situations that can be included in course syllabi or other communications. We have also provided examples from other institutions.

[Learn More](#)

COURSE COMBINES AVAILABLE

Course sections within Canvas for Fall 2023 are now available to be combined upon request. To request a combination of two or more course sections, email [**canvas@okstate.edu**](mailto:canvas@okstate.edu) with the names of the courses as they currently appear in Canvas including the five-digit CRN code.

Please be aware that not all materials in combined sections will be preserved during the combining process. Because of this, it is not recommended to combine sections once a semester has begun.

LEARNING MORE ABOUT CANVAS

We have many resources available for faculty to learn more about Canvas. Whether you are just starting here at OSU or are a seasoned pro, there is sure to be something to expand your Canvas knowledge!



CANVAS TIPS

NEED HELP WITH YOUR COURSE DESIGN?

As the semester progresses, remember that ITLE teaching support specialists are happy to assist. You can reach out to kdickey@okstate.edu or gina.morris@okstate.edu for assistance.

HAVE QUESTIONS ABOUT TEACHING ONLINE?

Contact ITLE for assistance with your online teaching questions.

Phone: [405.744.1000](tel:405.744.1000)

Email: canvas@okstate.edu

[ITLE WEBSITE](#)

Oklahoma State University

413 Whitehurst

Stillwater, OK 74078

Copyright © 2023 Oklahoma State University, All rights reserved.

You are subscribed to this list as an employee or student of Oklahoma State University.