



# INSTITUTE FOR TEACHING AND LEARNING EXCELLENCE

*Supporting faculty in the creation and development of high-impact learning opportunities.*



## IN THIS EMAIL

- [Upcoming Events](#)
- [Teaching Effectively in a World of AI](#)
- [Preparing Online Instructors 2.0](#)
- [Online Instructors Canvas Community](#)
- [Learning More About Canvas](#)



## **UPCOMING GTA CONFERENCE**

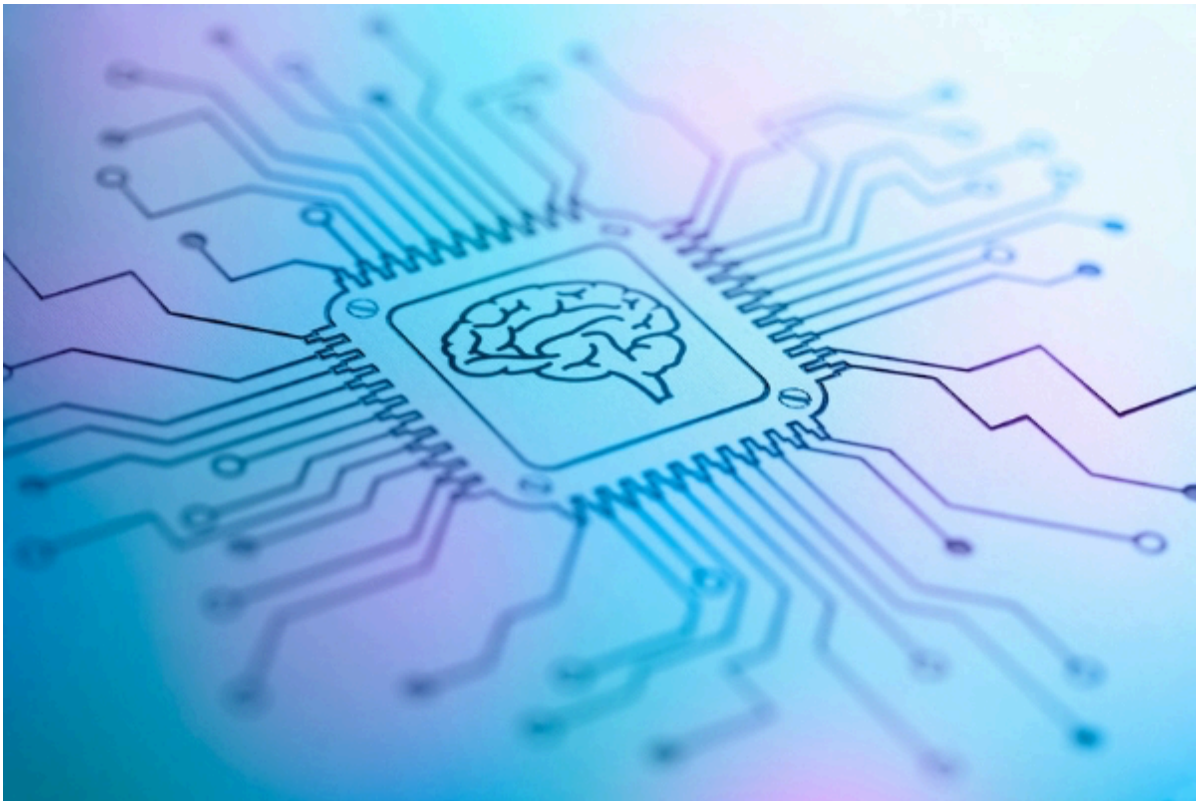
Be sure to save the date on the upcoming GTA Conference: "*Good Teaching is Good Teaching!*" Registration is now open and is linked below.

The conference will be held on Aug. 16, 2023, at the Wes Watkins Center.

[Register Here](#)

---

## **TEACHING EFFECTIVELY IN A WORLD OF AI**



AI tools can optimize tasks and save valuable time. ChatGPT can proactively identify repetitive tasks and improvements, further enhancing efficiency. Instructors can unlock new levels of productivity, focus on strategic work and benefit from a streamlined workflow. Try the following prompt approach to audit tasks in your day to find ways AI can assist time management.

[Learn More](#)

---

## **PREPARING ONLINE INSTRUCTORS 2.0**

This six-week fully online course is built upon the foundation of the prerequisite course Preparing Online Instructors. POI 2.0 is designed to help instructors deliver and facilitate quality online student learning experiences. Upon completion, participants will have the knowledge and skills necessary to facilitate quality student-centered learning while incorporating authentic learning in their online course activities.

[Learn More](#)

Registration Coming Soon!

---

## ONLINE INSTRUCTOR CANVAS COMMUNITY

To learn more about teaching online and access this week's module, we invite all online/hybrid instructors to join ITLE's Online Instructor Tips and Tools Community. Each week, a new tip or tool will be released detailing resources designed to enrich the quality of online courses. This community will also provide a space for instructors to ask and answer questions concerning best practices in online instruction. Click the link below or scan the QR code with your phone's camera to join in on the discussion!

[Join Here](#)



---

## LEARNING MORE ABOUT CANVAS

We have many resources available for faculty to learn more about Canvas. Whether you are just starting here at OSU or are a seasoned pro, there is sure to be something to expand your Canvas knowledge!

**CANVAS TIPS**

---

## NEED HELP WITH YOUR COURSE DESIGN?

As the semester progresses, remember that ITLE teaching support specialists are happy to assist. You can reach out to [kdickey@okstate.edu](mailto:kdickey@okstate.edu) or [gina.morris@okstate.edu](mailto:gina.morris@okstate.edu) for assistance.

## HAVE QUESTIONS ABOUT TEACHING ONLINE?

Contact ITLE for assistance with your online teaching questions.

Phone: [405.744.1000](tel:405.744.1000)

Email: [canvas@okstate.edu](mailto:canvas@okstate.edu)

[ITLE WEBSITE](#)

Oklahoma State University

413 Whitehurst

Stillwater, OK 74078

*Copyright © 2023 Oklahoma State University, All rights reserved.*

You are subscribed to this list as an employee or student of Oklahoma State University.