



INSTITUTE FOR TEACHING AND LEARNING EXCELLENCE

Supporting faculty in the creation and development of high-impact learning opportunities.



IN THIS EMAIL


- [Upcoming Events](#)
 - [Teaching Effectively in a World of AI](#)
 - [Canvas Course Shell Now Available](#)
 - [Learning More About Canvas](#)
-



**ITLE ANNUAL TEACHING WITH TECHNOLOGY
CONFERENCE: ENHANCING EDUCATION THROUGH
TECHNOLOGY & AI INNOVATION**

Oklahoma State University’s annual Teaching with Technology Conference aims to provide a forum where educational professionals from all disciplines and specialties may exchange their ideas and explore research, development and applications in this important field of teacher education and technology. Early bird registration has been extended to June 10, 2023. Register and learn more about the conference below!

Keynote Speaker

	<p>Dr. John Spencer, associate professor of education at George Fox University, founder of Blend Education Publishing and author of <i>Vintage Innovation: Leveraging Retro Tools and Classic Ideas to Design Deeper Learning Experiences</i>. @johnspencerideas</p>
---	--

Breakout Session Tracks Include:

1. **“Techquity”** — Technology as a Tool for Enhancing Accessibility, Inclusion and Diversity
2. **Collaboration & Community** — Uniting Minds, Creating Connections
3. **Authentic Learning** — Tech Tools that Empower Authentic Learning & Teaching
4. **Teaching in the Age of AI** — Innovation to Meet Acceleration

9 a.m. to 3 p.m. on Thursday, June 22, at Wes Watkins Center. Be sure to sign up now as early bird rates end this week!

[Register Here](#)

[Conference Overview \(PDF\)](#)

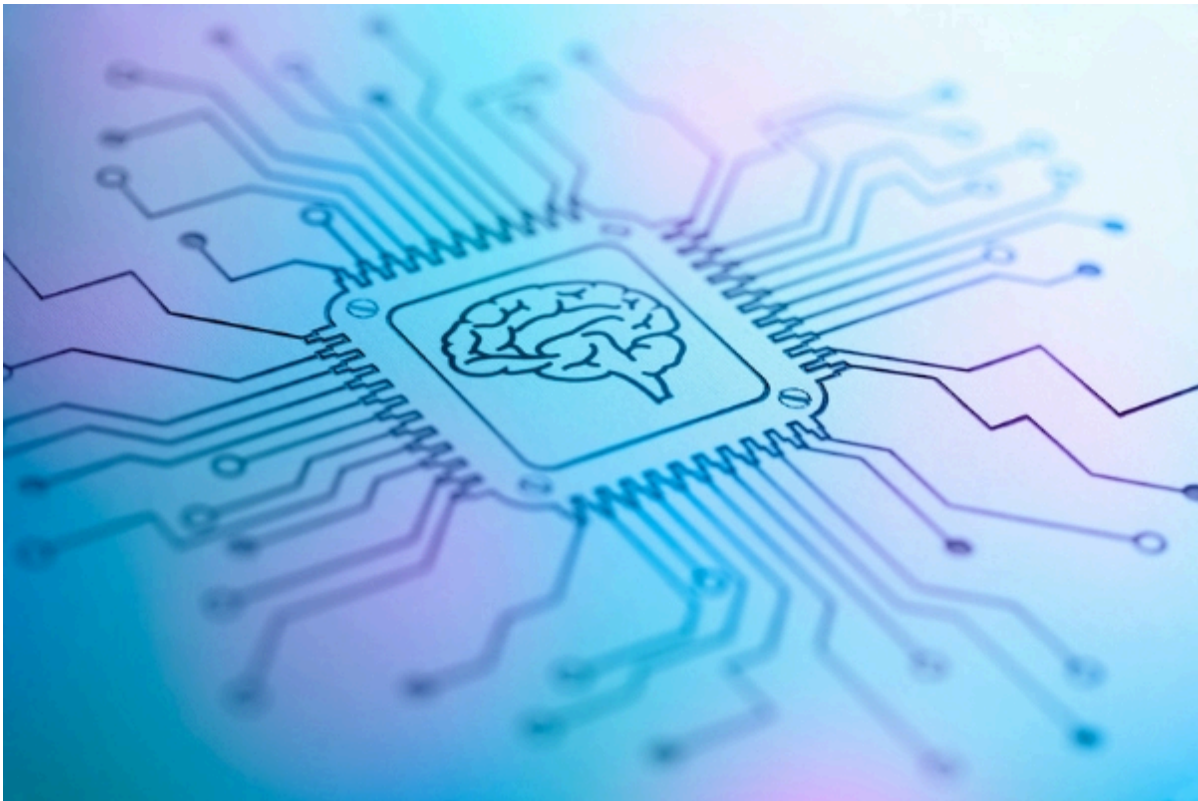
UPCOMING GTA CONFERENCE

Be sure to save the date on the upcoming GTA Conference: *"Good Teaching is Good Teaching!"* Registration is now open and is linked below.

The conference will be held on Aug. 16, 2023, at the Wes Watkins Center.

[Register Here](#)

TEACHING EFFECTIVELY IN A WORLD OF AI



Microsoft Designer is a web app for creating visuals and graphics available to you as a Microsoft 365 subscriber. It can generate images and designs using AI to assist you in creating unique content. Microsoft Designer is a tool you can use to create items like signs, invitations, logos, social media posts, website banners and much more.

Watch this week's AI tip on Microsoft Designer [here!](#)

View the PDF for how to use Microsoft Designer [here!](#)

CANVAS COURSE SHELL NOW AVAILABLE

Using a Canvas course template for online courses and traditional courses can enhance the learning environment for students. It provides a consistent and organized framework for presenting course content, ensuring alignment of essential course elements, saving time and effort, and facilitating collaboration and consistency. ITLE has created a course template Canvas Shell that instructors can download, import into their courses, and tailor to the content of the class. The following document describes how to preview the template and upload it into your Canvas Course.

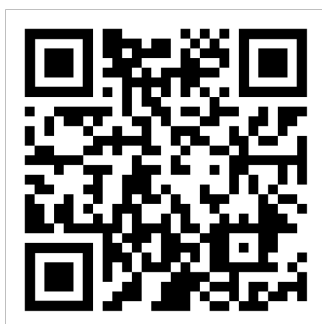
Watch [Introduction to Canvas Course Templates](#) to learn more!

Get instructions on how to import this course template [here!](#)

ONLINE INSTRUCTOR CANVAS COMMUNITY

To learn more about teaching online and access this week's module, we invite all online/hybrid instructors to join ITLE's Online Instructor Tips and Tools Community. Each week, a new tip or tool will be released detailing resources designed to enrich the quality of online courses. This community will also provide a space for instructors to ask and answer questions concerning best practices in online instruction. Click the link below or scan the QR code with your phone's camera to join in on the discussion!

[Join Here](#)



LEARNING MORE ABOUT CANVAS

We have many resources available for faculty to learn more about Canvas. Whether you are just starting here at OSU or are a seasoned pro, there is sure to be something to expand your Canvas knowledge!

CANVAS TIPS

NEED HELP WITH YOUR COURSE DESIGN?

As the semester progresses, remember that ITLE teaching support specialists are happy to assist. You can reach out to kdickey@okstate.edu or gina.morris@okstate.edu for assistance.

HAVE QUESTIONS ABOUT TEACHING ONLINE?

Contact ITLE for assistance with your online teaching questions.

Phone: [405.744.1000](tel:405.744.1000)

Email: canvas@okstate.edu

[ITLE WEBSITE](#)

Oklahoma State University

413 Whitehurst

Stillwater, OK 74078

Copyright © 2023 Oklahoma State University, All rights reserved.

You are subscribed to this list as an employee or student of Oklahoma State University.