

[View in Browser](#)



**INSTITUTE FOR TEACHING  
AND LEARNING EXCELLENCE**



## **IN THIS EMAIL**

- [Establishing Relevance](#)
- [Prompt Engineering with "SPARK"](#)
- [Learning More About Canvas](#)

**ITLE WEBSITE**

---

## Establishing Relevance

Engage students in course content by establishing relevance.

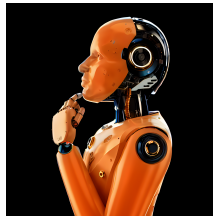


[Watch Here](#)

---

## Prompt Engineering with “SPARK”

Elevate your AI interactions with our latest AI Tool Tip: "Prompt Engineering with “SPARK.” This week, we explore Dr. Sabba Quidwai's inventive SPARK framework, a prompting method that combines Design Thinking principles with AI capabilities for effective AI prompting.



[Watch Here](#)

---

## Learning More About Canvas

We have many resources available for faculty to learn more about Canvas. Whether you are just starting here at OSU or are a seasoned pro, there is sure to be something to expand your Canvas knowledge!



[Learn More](#)

---

## Events

### Canvas Zoom Chats

Last Chat on Nov. 15  
Zoom Series

[Learn More](#)

[Register Here](#)



**Institute for Teaching & Learning Excellence**

Oklahoma State University  
100 ITLE | Stillwater, OK 74078  
405-744-1000 | itle.okstate.edu  
itle@okstate.edu

