

**Subject:** [Test] Teaching Tips - December 3, 2024  
**Date:** Tuesday, April 1, 2025 at 9:47:23 AM Central Daylight Time  
**From:** ITLE  
**To:** Worley, Justin

[View in Browser](#)



## IN THIS EMAIL

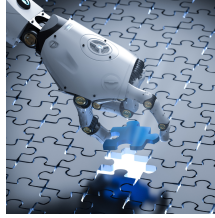
- [Designing College Courses Video Series](#)
- [Spring Graduate Teaching Assistant Conference](#)
- [End of Semester Practices](#)
- [Tips for Successful Finals – Meazure/ProctorU](#)

[ITLE WEBSITE](#)

---

[Designing College Courses Video Series](#) [Events](#)

The Backward Design model will help you create courses focused on student learning and understanding rather than covering content or following a textbook.



This approach shifts the focus from “What am I going to teach today?” to “What are students going to learn today?” It will also help you ensure that your courses are coherent, relevant, and engaging for students.

[Watch Here](#)

---

## Spring Graduate Teaching Assistant Conference

GTAs with teaching assignments are **required** to register and attend ITLE's Graduate Teaching Assistant Conference on **Tuesday, Jan. 7, 2025**, in Wes Watkins Center.



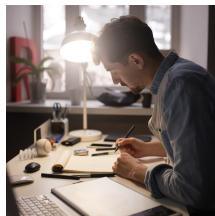
For more information and to register, please click below.

[Register Here](#)

---

## End of Semester Practices

As the semester winds down, maximizing review opportunities becomes crucial for remote and in-person learners. Interactive virtual sessions are key to engaging online students during this critical period. We, as instructors, must create inclusive online spaces where meaningful collaboration can thrive.



By actively amplifying diverse voices within well-designed review activities, we empower students to deepen their understanding and

### Academic Leadership

Dec. 11

[Register Here](#)

### Department Head

#### Brown Bag Lunch

Dec. 17

[Register Here](#)

### Spring GTA Conference

Jan. 7, 2025

[Register Here](#)

### iGen: Teaching the Smartphone Generation

Feb. 6, 2025

[Register Here](#)

feel a sense of belonging as they prepare for finals. This approach prioritizes participatory online review that fosters both comprehension and inclusivity for all learners. Read more about review strategies for online students.

[Read More](#)

---

## Tips for Successful Finals – Meazure/ProctorU

A positive student experience begins with student preparation. Please ensure that students take these steps before exam day.



The links at the bottom cover everything on this list.

- Students have to create a Test-taker ProctorU account with their **OSU email**.
- Invite your test-takers to schedule as soon as possible. With a **Live+** exam, this means scheduling a specific time and allowing up to 20 minutes for set-up. With a **Record+** exam, students can take the exam at any time during the exam window.
- Urge your test-takers to test their equipment prior to the exam time.
- Ask test-takers to Download the **Guardian Browser**.
- Encourage students to watch the test-taker experience video below to learn what to expect.
- If your exam is multiple choice, please use **Review+** if possible.

The following links are for your students:

[Watch Video](#)

[Learn More](#)



**Institute for Teaching & Learning Excellence**

Oklahoma State University  
100 ITLE | Stillwater, OK 74078  
405-744-1000 | [itle.okstate.edu](http://itle.okstate.edu)  
[itle@okstate.edu](mailto:itle@okstate.edu)

