

**Subject:** [Test] Tuesday Teaching Tips - October 1, 2024

**Date:** Tuesday, April 1, 2025 at 9:45:25 AM Central Daylight Time

**From:** ITLE

**To:** Worley, Justin

[View in Browser](#)



## IN THIS EMAIL

- [\*\*Top Five Conversations with Instructors\*\*](#)
  - [\*\*Conversation #2: Unpack Your Content with Learners in Mind\*\*](#)
- [\*\*Fall 2024 Scholarship of Teaching and Learning\*\*](#)
- [\*\*Online Teaching Tip\*\*](#)
- [\*\*Using Google Docs Version History to Detect AI Usage in Student Work\*\*](#)

- [Learning More About Canvas: Communicating Course Grade Progress](#)

ITLE WEBSITE

---

## Top Five Conversations with Instructors Conversation #2: Unpack Your Content with Learners in Mind

The second video in our Top Five Conversations series discusses the differences in the ways experts and novices organize information.



[Watch Here](#)

Missed the first video? Watch below!

[Watch Video 1](#)

---

## Fall 2024 Scholarship of Teaching and Learning

Drs. Kristi Dickey and Gina Morris will facilitate this six-week offering focusing on the characteristics of effective teaching in higher education.

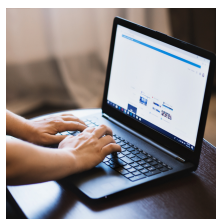


[Register Here](#)

---

## Online Teaching Tip

Join us for our introductory video, where we discuss the concept of Regular and Substantive Interaction (RSI).



Learn about its importance, key components, and practical tips for implementation.

---

## Events

### Fall 2024 Zoom Chats

Oct. 2, 2024

[Register Here](#)

### Early Career

Next Lunch Oct. 4, 2024

[Register Here](#)

### Fall 2024 Scholarship of Teaching and Learning

Starts Oct. 7, 2024

[Register Here](#)

### Academic

### Leadership Series

Oct. 9, 2024

[Register Here](#)

### Department Head

### Brown Bag Lunch

Oct. 15, 2024

[Register Here](#)

and practical tips for implementation.

Discover how to create engaging online courses that meet federal guidelines and promote student success.

[Watch Here](#)

---

## Using Google Docs Version History to Detect AI Usage in Student Work

Requiring students to complete assignments in Google Docs allows instructors to monitor the writing process and spot potential AI-generated content.



The Version History feature shows all changes made to a document, helping to identify large blocks of text that may have been inserted by AI. For detailed instructions on using this method in your courses, click the link below.

[Learn More](#)

---

## Learning More About Canvas: Communicating Course Grade Progress

Communicating privately to students about their course grade progress is important to student success. This is true of both underperforming and successfully performing students. Canvas easily allows faculty to message students about their current grading status directly from New Analytics.



- Message all students with grades within a specific percentage range.
- Message all students with late assignments.
- Message all students with missing assignments.

[Learn More](#)



**Institute for Teaching & Learning Excellence**

Oklahoma State University  
100 ITLE | Stillwater, OK 74078  
405-744-1000 | itle.okstate.edu  
itle@okstate.edu

