

Subject: [Test] Tuesday Teaching Tips - September 3, 2024
Date: Tuesday, April 1, 2025 at 9:45:09 AM Central Daylight Time
From: ITLE
To: Worley, Justin

[View in Browser](#)



IN THIS EMAIL

- [Developing Students' Writing Skills](#)
- [Online Teaching Tip: Quick Guide to Regular and Substantive Interaction \(RSI\)](#)
- [Fall 2024 OSU Reads](#)
- [Fall 2024 AI Bytes Series](#)
- [AI Teaching Tip](#)
- [Learning More About Canvas: Gradebook Late Submission Policy](#)

Developing Students' Writing Skills

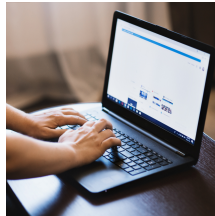
Helping students improve as writers can sometimes be challenging, but there are structures you can put in place that will support students as their skills develop.



[Watch Here](#)

Online Teaching Tip: Quick Guide to Regular and Substantive Interaction (RSI)

Understanding and implementing Regular and Substantive Interaction (RSI) is crucial for our online courses, especially to maintain federal financial aid eligibility and foster meaningful student engagement.



This week, we're excited to share a quick-reference infographic that breaks down the essentials of RSI. From the importance of instructor-driven interaction to meeting core regulatory requirements, this tool is designed as a quick reference guide to help you ensure your courses remain compliant and effective.

Take a moment to review the infographic and incorporate these RSI basics into your teaching strategy to enhance your online course delivery.

[View Infographic](#)

Want to learn more about RSI and earn a digital badge? Join OKLIS's Virtual Session on **Friday, Sept. 13**. Registrants can join live or receive a recording of the sessions.

Events

Fall 2024 Zoom Chats

Sept. 4, 2024

[Register Here](#)

Mastering Large Classroom

Teaching

for GTAs

Starts Sept. 4, 2024

[Register Here](#)

Academic

Leadership Series

Starts Sept. 11, 2024

[Register Here](#)

Faculty Reads

Starts Sept. 17, 2024

[Register Here](#)

Department Head

Brown Bag Lunch

Starts Sept. 17, 2024

[Register Here](#)

Fall 2024 AI Bytes Series

Starts Sept. 26, 2024

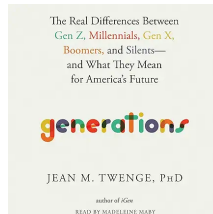
[Register Here](#)

[Live Attendee Registration](#)

[Asynchronous Registration](#)

Fall 2024 OSU Reads

Are generations defined by major historical events, such as the Great Depression for the Silents and 9/11 for the Millennials? Or is it the rapid evolution of technology that differentiates us?



Dr. Jean Twenge, a global authority on generational data, presents her findings from nearly a century's worth of information and describes the key shifts in attitudes and lifestyle choices that define each generation. Regardless of your feelings pertaining to the labeling of generations, this book offers an interesting perspective when considering why we are the way we are.

This semester the five OSU campuses join together for OSU Reads to consider ***Generations*** by Jean M. Twenge.

[Register Here](#)

Fall 2024 AI Bytes Series

Join us for a three-part workshop series exploring the potential of AI to transform teaching and learning.



Session 1: Copilot Unleashed – Elevating Productivity and Teaching Effectiveness

Discover how AI can streamline your workload and enhance your teaching practices.

Session 2: Beyond Traditional Assignments with AI Integration

Explore innovative ways to integrate AI into your assignments and assessments.

Session 3: Enhancing Learning and Integrity through Oral Presentations

Learn strategies to promote critical thinking and prevent AI misuse in your classroom.

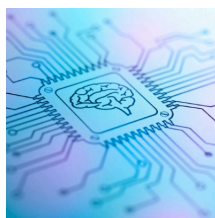
These hybrid workshops offer in-person and virtual attendance options.

Don't miss this opportunity to stay ahead of the curve and harness the power of AI for education!

[Register Here](#)

AI Teaching Tip

In this week's AI Teaching Tips, we introduce a new video showcasing how faculty across various disciplines incorporate AI tools like ChatGPT and DALL-E into their teaching. This video provides practical examples of how these technologies can enhance student engagement and learning outcomes.



Additionally, we've included a PDF guide on Dr. Ethan and Lilack Mollick's Seven AI Prompts, offering step-by-step instructions on how to integrate these innovative approaches into your classroom. Explore the potential of AI to enrich your teaching practice and support student success.

[Watch Here](#)

[PDF Guide](#)

Learning More About Canvas: Gradebook Late Submission Policy

Have you ever wished that there was an easy way in a Canvas course to create and apply a



How can Canvas be used to create and apply a late assignment policy to automatically deduct points up to a maximum value? Well, there is! Check it out.



- Applying a deduction to late submissions will automatically affect any previously graded submissions. The Late Submission policy should be set up prior to creating assignments.
- To ensure the late deduction is properly calculated for these assessments, you must set an Until date and time that occurs after the Due date.
- Select Grades, then click on the gear icon in the upper right. Late Policies is the first tab.
- Select “Automatically apply grade to late submissions.” Set the “Late submission deduction” to the percentage to be automatically deducted. The “Deduction interval” can be set to an hour or day. Both settings are rounded up (1.1 days or hours becomes 2.0).
- The deduction will be automatically deducted from the grade you give the student up to the “Lowest possible grade %” you set, at which the Late Submission policy deduction will end. The lowest possible grade percentage is the lowest score a student can receive when late policy deductions are applied to grades entered above that percentage.

[Learn More](#)



Institute for Teaching & Learning Excellence

Oklahoma State University
100 ITLE | Stillwater, OK 74078
405-744-1000 | itle.okstate.edu
itle@okstate.edu

