

Subject: [Test] Tuesday Teaching Tips - September 10, 2024
Date: Tuesday, April 1, 2025 at 9:45:14 AM Central Daylight Time
From: ITLE
To: Worley, Justin

[View in Browser](#)



IN THIS EMAIL

- [Establishing Relevance](#)
- [Fall 2024 Scholarship of Teaching and Learning](#)
- [Online Teaching Tips: What is Accessibility?](#)
- [Online Teaching Excellence Award & Outreach Excellence Award Nominations](#)
- [Quick Guide to Regular and Substantive Interaction \(RSI\)](#)

- [Fall 2024 OSU Reads](#)
- [Fall 2024 AI Bytes Series](#)
- [ITLE's AI for Instructors Course](#)
- [Learning More About Canvas: Gradebook Late Submission Policy](#)

[ITLE WEBSITE](#)

Establishing Relevance

Engage students in course content by establishing relevance.

[Watch Here](#)



Fall 2024 Scholarship of Teaching and Learning

Drs. Kristi Dickey and Gina Morris will facilitate this six-week offering focusing on the characteristics of effective teaching in higher education.

[Register Here](#)



Online Teaching Tips: What is Accessibility?

Accessibility measures how easily students can participate in activities and engage in content. To ensure accessible, equitable, and high quality educational experiences, educators should create POUR content.



Courses are designed best when all learners have the tools they need to be successful. POUR guidelines ensure online classrooms

Events

Fall 2024 Zoom Chats

Sept. 11, 2024

[Register Here](#)

Academic

Leadership Series

Starts Sept. 11, 2024

[Register Here](#)

Faculty Reads

Starts Sept. 17, 2024

[Register Here](#)

Department Head

Brown Bag Lunch

Starts Sept. 17, 2024

[Register Here](#)

Fall 2024 AI Bytes Series

Starts Sept. 26, 2024

[Register Here](#)

AI for Instructors Course

Starts Sept. 30, 2024

[Register Here](#)

Fall 2024 Scholarship of Teaching and Learning

are perceivable, operable, understandable and robust to all learners.

Dive in to transform your teaching approach and create a more inclusive educational environment!

[Resource Guide](#)

Online Teaching Excellence Award & Outreach Excellence Award Nominations

Online Teaching Excellence Award

This award recognizes a faculty member for a strong commitment to engaged, online teaching and student success.



The award consists of a \$2,000 stipend and an award plaque. The plaque is presented to the winning nominee as part of the President's Convocation each fall.

[Learn More](#)

Outreach Teaching Excellence Award

In 1981, University Extension, International & Economic created the Outreach Teaching Excellence Award to recognize and honor the contributions made by OSU faculty and staff as part of the Outreach mission of OSU. The award enriches the relationship between Academic Affairs and Outreach and helps foster participation in Outreach activities.

The award consists of a \$2,000 stipend and an award plaque. The plaque is presented to the winning nominee as part of the Award Convocation each fall. Winners and their college administrators are notified in advance of the presentation.

[Learn More](#)

Teaching and Learning

Starts Oct. 7, 2024

[Register Here](#)

Quick Guide to Regular and Substantive Interaction (RSI)

Want to learn more about RSI and earn a digital badge? Join OKLIS's Virtual Session on **Friday, Sept. 13**. Registrants can join live or receive a recording of the sessions.

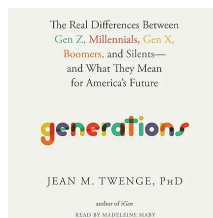


[Live Attendee Registration](#)

[Asynchronous Registration](#)

Fall 2024 OSU Reads

Are generations defined by major historical events, such as the Great Depression for the Silents and 9/11 for the Millennials? Or is it the rapid evolution of technology that differentiates us?



Dr. Jean Twenge, a global authority on generational data, presents her findings from nearly a century's worth of information and describes the key shifts in attitudes and lifestyle choices that define each generation. Regardless of your feelings pertaining to the labeling of generations, this book offers an interesting perspective when considering why we are the way we are.

This semester, the five OSU campuses join together for OSU Reads to consider "Generations" by Jean M. Twenge.

[Register Here](#)

Fall 2024 AI Bytes Series

Join us for a three-part workshop series exploring the potential of AI to transform teaching and learning.



Session 1: Copilot

Unleashed – Elevating Productivity and Teaching Effectiveness

Discover how AI can streamline your workload and enhance your teaching practices.

Session 2: Beyond Traditional

Assignments with AI Integration

Explore innovative ways to integrate AI into your assignments and assessments.

Session 3: Enhancing Learning and

Integrity through Oral Presentations

Learn strategies to promote critical thinking and prevent AI misuse in your classroom.

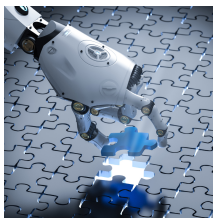
These hybrid workshops offer in-person and virtual attendance options.

Don't miss this opportunity to stay ahead of the curve and harness the power of AI for education!

[Register Here](#)

ITLE's AI for Instructors Course

Join our *AI for Instructors* **Asynchronous** course this fall and discover how to integrate Artificial Intelligence into your teaching practices. This **fully online, asynchronous course** offers:



- **Engaging Content:** Explore AI in education through practical applications and real-world examples.
- **Interactive Learning:** Participate in discussions and activities with peers and instructors.
- **Skill Development:** Master AI tools for course planning, content creation, and assessment.

Course Dates: Sept. 30 - Nov. 15

Earn a Digital Badge upon completion!

[More Details](#)

[Register Here](#)

Learning More About Canvas: Gradebook Late Submission Policy

Have you ever wished that there was an easy way in a Canvas course to create and apply a late assignment policy to automatically deduct points up to a maximum value? Well, there is! Check it out.



- Applying a deduction to late submissions will automatically affect any previously graded submissions. The Late Submission policy should be set up prior to creating assignments.
- To ensure the late deduction is properly calculated for these assessments, you must set an Until date and time that occurs after the Due date.
- Select Grades, then click on the gear icon in the upper right. Late Policies is the first tab.
- Select “Automatically apply grade to late submissions.” Set the “Late submission deduction” to the percentage to be automatically deducted. The “Deduction interval” can be set to an hour or day. Both settings are rounded up (1.1 days or hours becomes 2.0).
- The deduction will be automatically deducted from the grade you give the student up to the “Lowest possible grade %” you set, at which the Late Submission policy deduction will end. The lowest possible grade percentage is the lowest score a student can receive when late policy deductions are applied to grades entered above that percentage.

[Learn More](#)





Institute for Teaching & Learning Excellence

Oklahoma State University
100 ITLE | Stillwater, OK 74078
405-744-1000 | itle.okstate.edu
itle@okstate.edu

