

Subject: [Test] Tuesday Teaching Tips - September 17, 2024
Date: Tuesday, April 1, 2025 at 9:45:19 AM Central Daylight Time
From: ITLE
To: Worley, Justin

[View in Browser](#)



IN THIS EMAIL

- [Academic Choice](#)
- [Fall 2024 Scholarship of Teaching and Learning](#)
- [Enhance Your Online Teaching with Interactive Tools](#)
- [AI Assignment Audit](#)
- [ITLE's AI for Instructors Course](#)

- [Learning More About Canvas: Communicate with your Class with Announcements](#)

[**ITLE WEBSITE**](#)

Academic Choice

Incorporating academic choice into the selection of course materials, engagement of content and demonstration of learning can significantly increase motivation and intellectual curiosity.



[Watch Here](#)

Fall 2024 Scholarship of Teaching and Learning

Drs. Kristi Dickey and Gina Morris will facilitate this six-week offering focusing on the characteristics of effective teaching in higher education.



[Register Here](#)

Enhance Your Online Teaching with Interactive Tools

Research shows that incorporating interactive elements into online courses significantly boosts student engagement and promotes deeper learning.



Tools like Pear Deck and Nearpod can transform your presentations into dynamic, participatory lessons. These platforms offer features such as real-time feedback, collaborative boards and virtual field trips, making online learning

Events

Fall 2024 Zoom Chats

Sept. 18, 2024

[Register Here](#)

Fall 2024 AI Bytes Series

Starts Sept. 26, 2024

[Register Here](#)

AI for Instructors Course

Starts Sept. 30, 2024

[Register Here](#)

Fall 2024 Scholarship of Teaching and Learning

Starts Oct. 7, 2024

[Register Here](#)

Academic

Leadership Series

Oct. 9, 2024

[Register Here](#)

Department Head

Brown Bag Lunch

Oct. 15, 2024

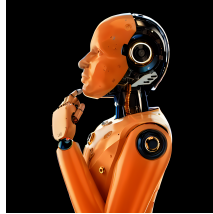
[Register Here](#)

more engaging and effective.

[Explore the Full Guide Here](#)

AI Assignment Audit

As AI tools become more prevalent in student writing, there is a growing need for resources that help instructors balance innovation with academic integrity.



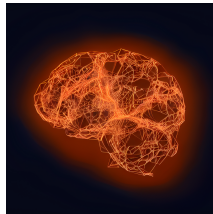
This newly developed resource guide assists educators in auditing and redesigning traditional writing assignments to integrate AI tools responsibly. It offers practical strategies for guiding student use of AI while preventing misuse, providing transparent approaches that align with course objectives and promoting ethical engagement in academic writing.

[Watch Here](#)

[PDF Resource Guide](#)

ITLE's AI for Instructors Course

Join our *AI for Instructors* **Asynchronous** course this fall and discover how to integrate Artificial Intelligence into your teaching practices. This **fully online, asynchronous course** offers:



- **Engaging Content:** Explore AI in education through practical applications and real-world examples.
- **Interactive Learning:** Participate in discussions and activities with peers and instructors.
- **Skill Development:** Master AI tools for course planning, content creation, and assessment.

Course Dates: Sept. 30 - Nov. 15

Earn a Digital Badge upon completion!

[More Details](#)

[Register Here](#)

Learning More About Canvas: Communicate with your Class with Announcements (Announcements Part 1)

Have you ever wanted to quickly communicate with all of your students in a course without sending a message or email?



Maybe you want to remind them of an upcoming assignment deadline, or let them know that you need to cancel class. Announcements are the fastest and easiest way to communicate with students about these situations. Check it out!

- Welcome students with an announcement at the beginning of the semester.
- Remind students of key events and deadlines.
- Allow comments by students and create display dates for temporary extra credit.
- Use announcements to communicate canceled classes.
- Attach a handout or file directly in the announcement.
- Announcements are available to students by selecting ANNOUNCEMENTS in the course menu.

[Learn More](#)



Institute for Teaching & Learning Excellence
Oklahoma State University
100 ITLE | Stillwater, OK 74078
405-744-1000 | itle.okstate.edu
itle@okstate.edu



