

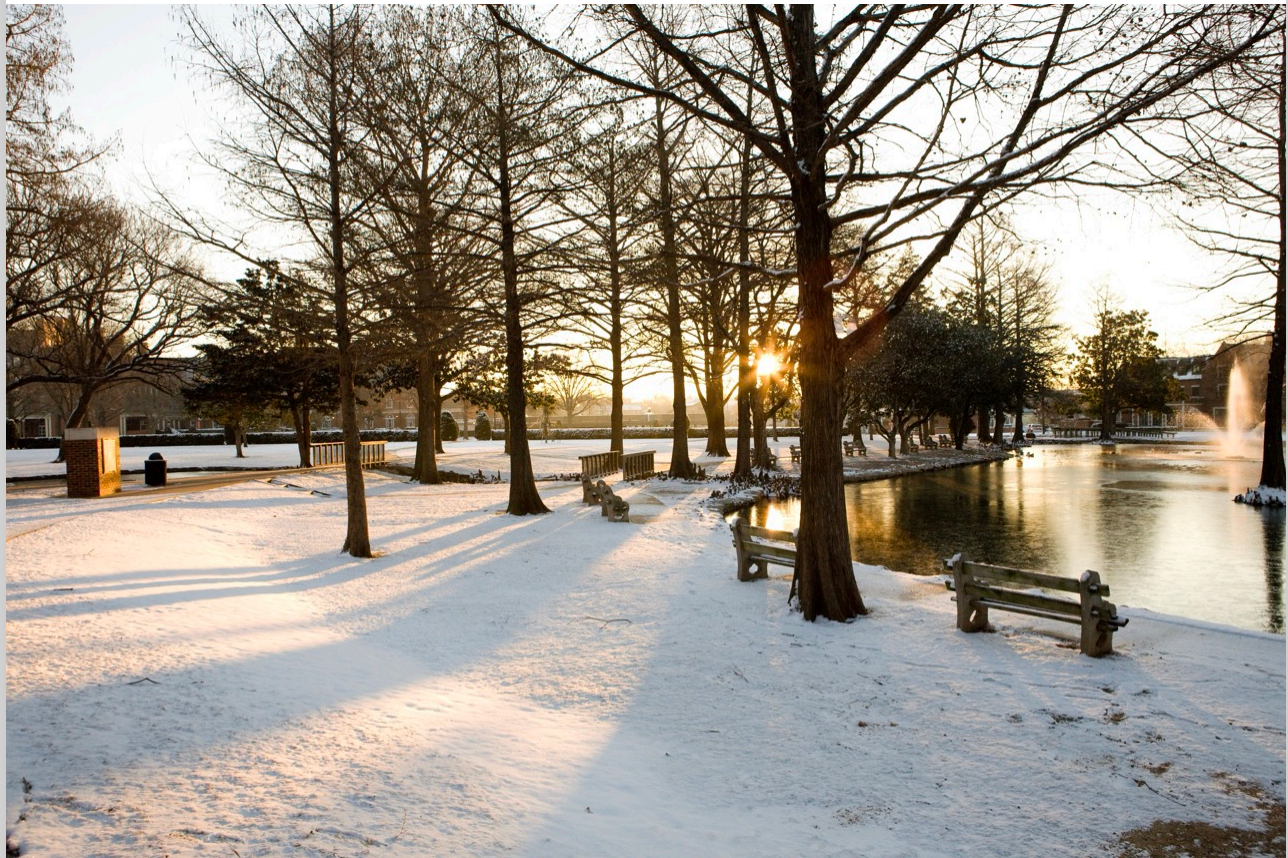
Subject: [Test] Teaching Tips - December 10, 2024

Date: Tuesday, April 1, 2025 at 9:47:25 AM Central Daylight Time

From: ITLE

To: Worley, Justin

[View in Browser](#)



IN THIS EMAIL

- [Designing College Courses Video Series](#)
- [Spring Graduate Teaching Assistant Conference](#)
- [Be a Part of Our AI Integration Program!](#)
- [Online Course Template](#)
- [Canvas End of Fall Semester Course Design Checklist](#)

Designing College Courses Video Series

The Backward Design model will help you create courses focused on student learning and understanding rather than covering content or following a textbook.



This approach shifts the focus from “What am I going to teach today?” to “What are students going to learn today?” It will also help you ensure that your courses are coherent, relevant, and engaging for students.

[Watch Here](#)

Spring Graduate Teaching Assistant Conference

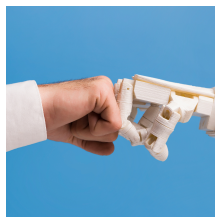
GTA's with teaching assignments are required to attend ITLE's Graduate Teaching Assistant Conference on Tuesday, Jan. 7, 2025, in Wes Watkins Center. For more information and to register, please click the link below.



[Register Here](#)

Be a Part of Our AI Integration Program!

Are you ready to bring innovation into your teaching? Our department is launching an AI Integration Program in the spring of 2025, and we're looking for participants to join this exciting initiative.



This program will:

Events

Academic Leadership

Dec. 11

[Register Here](#)

Department Head

Brown Bag Lunch

Dec. 17

[Register Here](#)

Spring GTA Conference

Jan. 7, 2025

[Register Here](#)

iGen: Teaching the Smartphone Generation

Feb. 6, 2025

[Register Here](#)

- Provide access to ChatGPT and tailored training sessions.
- Help integrate AI tools into your courses for enhanced teaching and learning.
- Offer continuous support from the Institute for Teaching Excellence to guide implementation.

We're recruiting faculty, department heads and accreditation managers from 10 programs to participate in this transformative project. Interested? Read more and apply using the following link.

[Program Information](#)

[Apply Here](#)

Online Course Template

Online course templates support instructors in cultivating engaging virtual classrooms. Templates establish cohesive learning environments while allowing customization by offering an organized structure and aligned key components. Rather than building online courses from scratch, leveraging an intuitive template saves educators precious preparation time.



The ITLE team has designed a downloadable Canvas course template aligned with best practices. This shell incorporates collaborative tools and essential course facets that faculty can adapt to their subject matter. The following guide outlines how to easily access this ready-made template and import it into your Canvas course space.

[Read More](#)

Canvas End of Fall Semester Course Design Checklist

Whether you start during the fall semester or

after fall grades are in, you will need to organize and create content for your spring 2025 courses or copy existing content into your new course shells. Regardless of when you start, select a time to begin that allows for how many other requests will happen in early January and schedule a calendar reminder.



Spring 2025 course shells are available in Canvas now.

- Course sections within Canvas for 2025 can be combined upon request. To request a combination of two or more course sections, email canvas@okstate.edu with the names of the courses as they currently appear in Canvas, including the five-digit CRN code. Combining courses should precede adding new content.
- If you are reusing content from another course, copy that course or course materials and save them for later re-importing. It is generally easier to copy a course and delete what you don't need than to import what you think you need.
- Once imported, remove any content you don't wish to use and check that the dates for these materials and assessments are correct.
- Make sure "lock until" dates, requirements and prerequisites are correctly set.
- Design for accessibility. When content is added, use the Accessibility Checker tool in the RCE (rich content editor). It will check things such as heading structure, alt tags on images, appropriate color contrasts and fonts, etc.
- Validate links and use Student View to review the entire course.
- Publish your course. Students will not have access until you have Published your course and the Start Date has passed. Remember that both the module and its content must be

published for student access. You can check the Start Date on the course Settings page.



Institute for Teaching & Learning Excellence

Oklahoma State University
100 ITLE | Stillwater, OK 74078
405-744-1000 | itle.okstate.edu
itle@okstate.edu

