

**Subject:** [Test] Tuesday Teaching Tips — Jan. 16, 2024  
**Date:** Tuesday, April 1, 2025 at 9:36:20 AM Central Daylight Time  
**From:** ITLE  
**To:** Worley, Justin

[View in Browser](#)



## IN THIS EMAIL

- [Encouraging Student Attendance](#)
- [Setting the Stage for Successful Online Learning](#)
- [AI for Instructors](#)
- [Improving Student Academic Progress: Individual Assignments](#)

[ITLE WEBSITE](#)

---

## Encouraging Student Attendance

Student attendance is vital for success. Consider utilizing strategies that promote attendance in positive and authentic ways.



[Watch Here](#)

[PDF Guide](#)

---

## Setting the Stage for Successful Online Learning

In the ever-evolving landscape of online teaching, setting the stage for a successful learning journey begins with a well-structured orientation. An effective orientation module for your online course acquaints students with the virtual classroom and sets clear expectations, guidelines, and a roadmap for their academic voyage. Read on to learn about three critical elements necessary for a well-designed online course orientation.

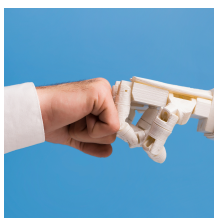


[Learn More](#)

---

## AI for Instructors

Step into the world of "AI for Instructors," an engaging dive into how Artificial Intelligence is revolutionizing higher education. This comprehensive course equips instructors with the expertise to harness AI tools, transforming teaching and learning paradigms. From fundamentals to real-world implementation, participants explore reshaping course structures, content creation, assessment methodologies, and beyond. Embracing growth mindset principles, we navigate the nuances of AI integration in education, empowering educators to confidently integrate AI into their



---

## Events

### Spring 2024 AI Bytes

Starting Jan. 24, 2024

[Register Here](#)

### Inclusive Teaching Spring 2024

Starting Jan. 29, 2024

[Register Here](#)

### Spring 2024 Scholarship of Teaching & Learning

Starting Jan. 29, 2024

[Register Here](#)

### Spring 2024 Preparing Online Instructors

Starting Feb. 5, 2024

[Register Here](#)

### Spring 2024 Canvas Zoom Chats

Starting Feb. 7, 2024

[Register Here](#)

### Spring 2024 OSU Faculty Reads

Starting Feb. 9, 2024

[Register Here](#)

education, empowering you to confidently integrate AI into your teaching strategies by the course's end. Click the link below to learn more and register for the course.

[Register Here](#)

---

## Improving Student Academic Progress: Individual Assignments

It can be challenging to influence students' academic progress in a course. Early and consistent communication is important. Canvas easily allows faculty to message students about an assignment directly from the Gradebook.



- Message all students who haven't submitted yet.
- Message all students who haven't been graded yet.
- Message all students who scored LESS than [point value].
- Message all students who scored MORE than [point value].

[Learn More](#)

**Institute for Teaching & Learning Excellence**  
Oklahoma State University  
100 ITLE | Stillwater, OK 74078  
405-744-1000 | [itle.okstate.edu](mailto:itle.okstate.edu)  
[itle@okstate.edu](mailto:itle@okstate.edu)

