

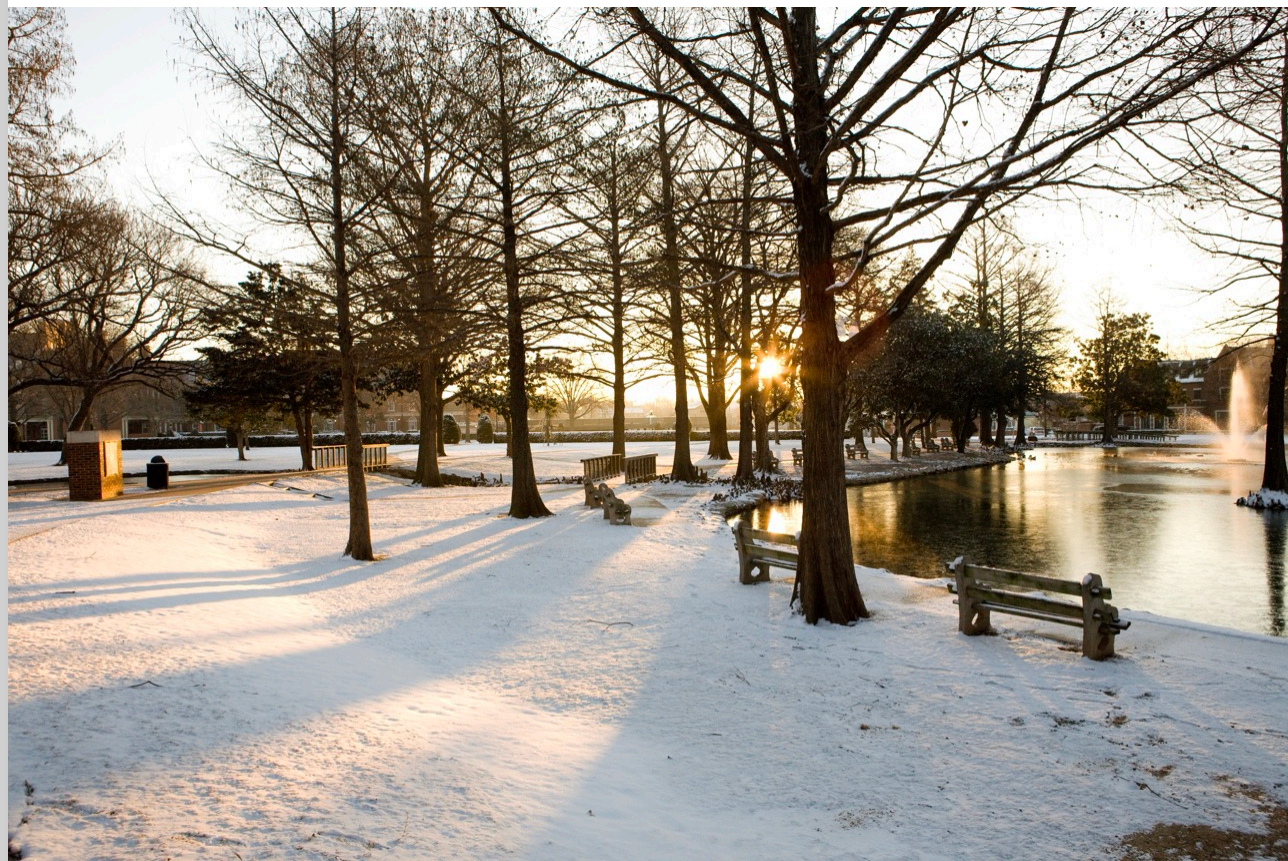
Subject: [Test] Tuesday Teaching Tips — Jan. 23, 2024

Date: Tuesday, April 1, 2025 at 9:40:58 AM Central Daylight Time

From: ITLE

To: Worley, Justin

[View in Browser](#)



IN THIS EMAIL

- [Important & Upcoming ITLE Events](#)
- [AI Bytes Session 1](#)
- [AI for Instructors](#)
- [Improving Student Academic Progress: Individual Assignments](#)

Important & Upcoming ITLE Events

Scholarship of Teaching and Learning Online Professional Development

Jan. 29 - March 8

[Register Here](#)



Inclusive Teaching Online Professional Development

Jan. 29 - April 26

[Register Here](#)



AI Bytes Session 1: From Inspiration to Implementation: Sharing Successful AI Case Studies in Teaching

Join us live for the first session of our virtual AI Bytes Series. Explore the effective integration of AI within diverse teaching contexts at universities, drawing insights from their experiences to inspire your own creative ideas. The session will take place at noon via Zoom. Click the registration link below to sign up and participate.



[Register Here](#)

[Learn More](#)

AI for Instructors

Step into the world of "AI for Instructors," an engaging dive into how Artificial Intelligence is revolutionizing higher education. This comprehensive course equips instructors



Events

Spring 2024 AI Bytes

Starting Jan. 24, 2024

[Register Here](#)

Inclusive Teaching Spring 2024

Starting Jan. 29, 2024

[Register Here](#)

Spring 2024 Scholarship of Teaching & Learning

Starting Jan. 29, 2024

[Register Here](#)

Spring 2024 Preparing Online Instructors

Starting Feb. 5, 2024

[Register Here](#)

Spring 2024 Canvas Zoom Chats

Starting Feb. 7, 2024

[Register Here](#)

Spring 2024 OSU Faculty Reads

Starting Feb. 9, 2024

[Register Here](#)

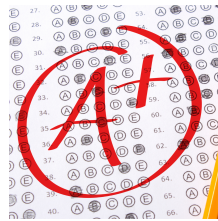
comprehensive course equips instructors with the expertise to harness AI tools, transforming teaching and learning paradigms. From fundamentals to real-world implementation, participants explore reshaping course structures, content creation, assessment methodologies and beyond. Embracing growth mindset principles, we navigate the nuances of AI integration in education, empowering you to confidently integrate AI into your teaching strategies by the course's end. Click the link below to learn more and register for the course.



[Register Here](#)

Improving Student Academic Progress: Communicating Course Grade Progress

Communicating privately to students about their course grade progress is important to student success. This is true of both underperforming and successfully performing students. Canvas easily allows faculty to message students about their current grading status directly from New Analytics.



- Message all students with grades within a specific percentage range.
- Message all students with late assignments.
- Message all students with missing assignments.

[Learn More](#)



Institute for Teaching & Learning Excellence
Oklahoma State University
100 ITLE | Stillwater, OK 74078
405-744-1000 | itle.okstate.edu
itle@okstate.edu



