

Subject: [Test] Tuesday Teaching Tips - April 16, 2024
Date: Tuesday, April 1, 2025 at 9:41:48 AM Central Daylight Time
From: ITLE
To: Worley, Justin

[View in Browser](#)



IN THIS EMAIL

- [Preparing Students for Exams](#)
- [2024 Teaching with Technology Conference](#)
- [Reimagining Learning with Artificial Intelligence](#)
- [Canvas End of Semester 1: Dropping Highest or Lowest Assignment Scores \(Creating Rules for an Assignment Group\)](#)

[ITLE WEBSITE](#)

Preparing Students for Exams

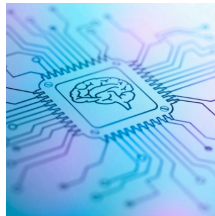
Episode 56 of the Faculty Focus podcast offers evidence-based study strategies that you can implement into your course to help prepare students for exams. Rather than cramming the night before, you can encourage students to take more responsibility in their review techniques and redesign exams to promote learning.



[Excuse Me, Will This be on the Exam](#)

2024 Teaching with Technology Conference

Save the date, register and submit your proposals for ITLE's 2024 Teaching with Technology Conference on June 13 at the Wes Watkins Center. This year's theme is 'Breaking Barriers, Embracing Change, Evolving for Success!' Our keynote speaker, Dr. Sabba Quidwai from @designingschools, is sure to spark innovation and a growth mindset in the space of EdTech.



We urge you to submit your presentation proposals and share the possibilities of powerful technology tools or reshaped teaching approaches in response to AI for impactful student success.

Register today!

[Register Here](#)

[Learn More](#)

Reimagining Learning with Artificial Intelligence

Events

Spring 2024 Canvas Zoom Chats

Next Session on
April 17, 2024

[Register Here](#)

Teaching with Technology 2024

June 13, 2024

[Register Here](#)

OSU ITLE is committed to advancing innovative educational methods that leverage the power of AI. To this end, we invite our faculty and instructors to share their AI-enhanced teaching materials in the form of assignments or assessments to expand our shared instructional knowledge base. Your contributions will inspire fellow educators and provide deeper insight and perspective into incorporating AI into your course design.



The first five individuals to submit their AI-integrated assignments or assessments that meet the provided criteria will receive a complimentary copy of John Spencer's insightful book, "The A.I. Roadmap: Human Learning in the Age of Smart Machines."

Please note that the submission deadline is May 7. Your valuable input will help us create an extensive collection of AI-driven educational resources, enabling educators throughout OSU ITLE to design engaging and forward-thinking courses for our students.

[Submit Here](#)

Canvas End of Semester 1: Dropping Highest or Lowest Assignment Scores (Creating Rules for an Assignment Group)

Have you ever ended the semester and wished that you could drop the highest or lowest scores from a student's grades? We've all seen students who start the semester weak and end strong, or who perform very well except for a few poor efforts. Even in a small class, determining which scores to remove can be an extremely difficult task. Canvas easily allows you to drop these outlying grades and does the heavy lifting for you with a process called an Assignment Rule. Check it out!



- An Assignment Rule handles any exceptions that you want

...an assignment rule handles any exceptions that you want to create for grade calculations.

- Assignment rule choices are, drop highest X number of scores, or drop lowest X number of scores. A third choice is Never Drop, that allows you to determine assignments (such as the midterm and final) that cannot be dropped.
- Canvas automatically considers how the rule most negatively or positively affects the student's overall score. When using a drop lowest rule, if a student has a 70% on a 50-point assignment and a 50% on a 26-point assignment it would drop the 70% assignment, as dropping that would produce the best total score for that student.
- Using all three of these rules will protect the most important assignments from being changed while removing outliers from the grade calculation.

[Learn More](#)



Institute for Teaching & Learning Excellence

Oklahoma State University
100 ITLE | Stillwater, OK 74078
405-744-1000 | itle.okstate.edu
itle@okstate.edu

