

Subject: [Test] Tuesday Teaching Tips - April 23, 2024

Date: Tuesday, April 1, 2025 at 9:41:50 AM Central Daylight Time

From: ITLE

To: Worley, Justin

[View in Browser](#)



IN THIS EMAIL

- [Class Adjourned: The Importance of Ending Well](#)
- [2024 Teaching with Technology Conference](#)
- [Reimagining Learning with Artificial Intelligence](#)
- [End of Semester Practices](#)
- [Canvas End of Semester 2: How do I Assign Course Extra Credit?](#)

Class Adjourned: The Importance of Ending Well

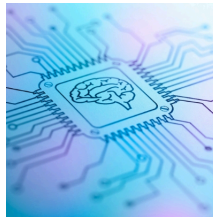
Episode 79 of the Faculty Focus podcast offers end-of-semester strategies for making your course memorable.



[Listen Here](#)

2024 Teaching with Technology Conference

Save the date, register and submit your proposals for ITLE's 2024 Teaching with Technology Conference on June 13 at the Wes Watkins Center. This year's theme is 'Breaking Barriers, Embracing Change, Evolving for Success!' Our keynote speaker, Dr. Sabba Quidwai from @designingschools, is sure to spark innovation and a growth mindset in the space of EdTech.



We urge you to submit your presentation proposals and share the possibilities of powerful technology tools or reshaped teaching approaches in response to AI for impactful student success. Register today!

[Register Here](#)

[Learn More](#)

Reimagining Learning with Artificial Intelligence

OSU ITLE is committed to advancing innovative educational methods that leverage



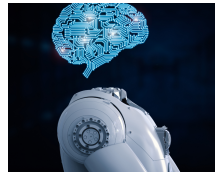
Events

Teaching with Technology 2024

June 13, 2024

[Register Here](#)

innovative educational methods that leverage the power of AI. To this end, we invite our faculty and instructors to share their AI-enhanced teaching materials in the form of assignments or assessments to expand our shared instructional knowledge base. Your contributions will inspire fellow educators and provide deeper insight and perspective into incorporating AI into your course design.



The first five individuals to submit their AI-integrated assignments or assessments that meet the provided criteria will receive a complimentary copy of John Spencer’s insightful book, “The A.I. Roadmap: Human Learning in the Age of Smart Machines.”

Please note that the submission deadline is May 7. Your valuable input will help us create an extensive collection of AI-driven educational resources, enabling educators throughout OSU ITLE to design engaging and forward-thinking courses for our students.

[Submit Here](#)

End of Semester Practices

Maximizing review opportunities becomes crucial for remote and in-person learners as the semester winds down. Interactive virtual sessions are key to engaging online students during this critical period. We, as instructors, must create inclusive online spaces where meaningful collaboration can thrive. By actively amplifying diverse voices within well-designed review activities, we empower students to deepen their understanding and feel a sense of belonging as they prepare for finals. This approach prioritizes participatory online review that fosters both comprehension and inclusivity for all learners. Read more about review strategies for online students.



[Read More](#)

Canvas End of Semester 2: How do I Assign Course Extra Credit?

Have you ever wanted to add extra credit when finishing your grades to add extra points for extra effort, or to apply a simple curve to the class? There is no extra credit default tool in Canvas, but there is a simple way to add extra credit to course grades after you've entered all your final grades. Give it a try!



- Calculate what the maximum percentage you want to give as extra credit based on the total points for the semester.
- Add a zero-point assignment set to “No admissions” type. Points added in the grade field for each student will be extra credit.
- You must make sure that the gradebook is set up correctly by setting all your dashes to 0. A dash means that the assignment was not turned in and the points for that assignment are removed from the total. The dash is great for giving a student a pass on an assignment but will skew the extra credit upward as the extra credit points would be fixed, but the total points will be lower.
- If you are using weighted grading using assignment groups, you will need to test the points to add to find how the weighting skews the results. Create an assignment group with 0 points, then add a single assignment worth 0 points as in bullet 2. Determine how points added to this assignment for a single student affect the final grade before you adjust all the other grades.

Institute for Teaching & Learning Excellence

Oklahoma State University
100 ITLE | Stillwater, OK 74078
405-744-1000 | itle.okstate.edu
itle@okstate.edu



