

Subject: [Test] Teaching Tips - January 6, 2025
Date: Tuesday, April 1, 2025 at 11:34:45 AM Central Daylight Time
From: ITLE
To: Worley, Justin

[View in Browser](#)



IN THIS EMAIL

- [Designing College Courses Video Series](#)
- [Be a Part of Our AI Integration Program](#)
- [Tips for Successful Proctoring Using Meazure/ProctorU](#)

[ITLE WEBSITE](#)

Designing College Courses Video Series Events

The Backward Design model will help you create courses focused on student learning and understanding rather than covering content or following a textbook.

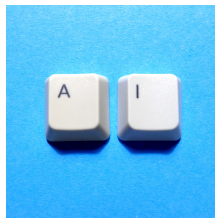


This approach shifts the focus from “What am I going to teach today?” to “What are students going to learn today?” It will also help you ensure that your courses are coherent, relevant, and engaging for students.

[Watch Here](#)

Be a Part of Our AI Integration Program!

Are you ready to bring innovation into your teaching? Our department is launching an AI Integration Program in the spring of 2025, and we’re looking for participants to join this exciting initiative.



This program will:

- Provide access to ChatGPT and tailored training sessions.
- Help integrate AI tools into your courses for enhanced teaching and learning.
- Offer continuous support from the Institute for Teaching Excellence to guide implementation.

We are recruiting ten academic programs with teams of three to four faculty members to join this transformative initiative. Faculty teams will lead the effort in integrating AI tools into their programs across courses.

Read more and apply using the following link.

[Program Information](#)

Canvas Fundamentals

Jan. 7

[Register Here](#)

Using Meazure Learning

Jan. 8

[Register Here](#)

Assessment with Canvas

Jan 9.

[Register Here](#)

Synchronous and Asynchronous Teaching in Canvas

Jan. 10

[Register Here](#)

Spring 2025 Canvas Zoom Chats

Starts Jan. 15

[Register Here](#)

Department Head Brown Bag Lunch

Jan. 21

[Register Here](#)

Spring 2025 Inclusive Teaching

Jan. 27

[Register Here](#)

iGen: Teaching the Smartphone Generation

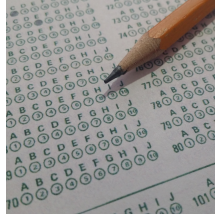
Feb. 6

[Register Here](#)

[Apply Here](#)

Tips for Successful Proctoring Using Meazure/ProctorU.

A positive student experience begins with student preparation. Please ensure that students take these steps prior to exam day. The links at the bottom cover everything on this list.



- Students need to create a Test-taker ProctorU account
- Invite your test-takers to schedule as soon as possible. With a Live+ exam, scheduling a specific time is necessary. With a Record+ exam, students can take the exam at any time during the exam window.
- Urge your test-takers to test their equipment prior to the exam time using the Test-It-Out feature.
- Ask test-takers to download the Guardian Browser
- Encourage students to watch the test-taker experience video for what to expect:

[Watch Here](#)

[Learn More](#)

Academic Leadership

Feb. 12

[Register Here](#)

Spring 2025 Faculty Reads

March 11

[Register Here](#)

Spring 2025 Scholarship of Teaching and Learning

March 24

[Register Here](#)

Institute for Teaching & Learning Excellence

Oklahoma State University
100 ITLE | Stillwater, OK 74078
405-744-1000 | itle.okstate.edu
itle@okstate.edu

